

Detail Ref.	Detail Title
HH-TJ-PF-01	External Masonry Cavity Wall, Partial-Fill - Suspended Beam And Block Floor, Insulation Above Slab
HH-TJ-PF-02	External Masonry Cavity Wall, Partial-Fill - Suspended In-Situ Concrete Floor, Insulation Below Slab
HH-TJ-PF-03	External Masonry Cavity Wall, Partial-Fill - Concrete Ground Bearing Floor, Insulation Below Slab
HH-TJ-PF-04	External Masonry Cavity Wall, Partial-Fill - Independent Lintel
HH-TJ-PF-05	External Masonry Cavity Wall, Partial-Fill - Steel Lintel, Perforated Base Plate, (Insulated Soffit)
HH-TJ-PF-22	External Masonry Cavity Wall, Partial-Fill - Steel Lintel, Open Back (no continuous base plate)
HH-TJ-PF-26	External Masonry Cavity Wall, Partial-Fill - Catnic Thermally Broken Lintel
HH-TJ-FP-27	External Masonry Cavity Wall, Partial-Fill - Hi-Therm+ Thermally Broken Lintel
HH-TJ-PF-06	External Masonry Cavity Wall, Partial-Fill - Sill
HH-TJ-PF-07	External Masonry Cavity Wall, Partial-Fill - Jamb
HH-TJ-PF-08	External Masonry Cavity Wall, Partial-Fill - Intermediate Timber Floor Within A Dwelling
HH-TJ-PF-25	External Masonry Cavity Wall, Partial-Fill - Intermediate Timber Floor, Insulated (over exposed area)
HH-TJ-PF-09	External Masonry Cavity Wall, Partial-Fill - Precast Concrete Separating Floor Between Dwellings
HH-TJ-PF-10	External Masonry Cavity Wall, Partial-Fill - Pitched Roof, Gable, Insulation At Ceiling Level, Ventilated Loft
HH-TJ-PF-11	External Masonry Cavity Wall, Partial-Fill - Pitched Roof, Gable, Insulation At Rafter Level, Unventilated Rafter Void
HH-TJ-PF-12	External Masonry Cavity Wall, Partial-Fill - Pitched Roof, Eaves, Insulation At Ceiling Level, Ventilated Loft
HH-TJ-PF-13	External Masonry Cavity Wall, Partial-Fill - Pitched Roof, Eaves, Insulation At Rafter Level, Unventilated Rafter Void
HH-TJ-PF-23	External Masonry Cavity Wall, Partial Fill - Pitched Roof, Eaves, Insulation At Rafter Level, Unventilated Rafter Void
HH-TJ-PF-14	External Masonry Cavity Wall, Partial-Fill - Normal Corner
HH-TJ-PF-15	External Masonry Cavity Wall, Partial-Fill - Inverted Corner
HH-TJ-PF-16	External Masonry Cavity Wall, Partial-Fill - Party Wall Between Dwellings
HH-TJ-PF-24	External Masonry Cavity Wall, Partial Fill - Staggered External (flanking) Wall Junction
HH-TJ-PW-17	Party Wall Masonry, Full Fill - Suspended Beam And Block Floor, Insulation Above Slab
HH-TJ-PW-18	Party Wall Masonry, Full Fill - Suspended Concrete Floor, Insulation Below Slab
HH-TJ-PW-19	Party Wall Masonry, Full Fill - In-Situ Concrete Ground Bearing Floor, Insulation Below Slab
HH-TJ-PW-20	Party Wall Masonry, Full Fill - Roof, Insulation At Ceiling Level, Ventilated Loft
HH-TJ-PW-21	Party Wall Masonry, Full Fill - Roof, Insulation At Rafter Level, Unventilated Rafter Void

REV.	DATE.	DESCRIPTION.	BY.
E	08/2023	REFERENCES TO CONSTRUCTIVE AND REGISTERED CONSTRUCTION DETAILS REMOVED. HH-TJ-PF-27 ADDED. INSULATION REVISED FOR HH-TJ-PF-10 & 20	SJB
D	04/2021	REFERENCE TO H+H CALCULATED Ψ-VALUES ADDED. SCREED THICKNESS NOTE REVISED. BLOCK FORMATS NOTE REVISED	SJB
C	04/2021	HH-TJ-PF-24, HH-TJ-PF-25 & HH-TJ-PF-26 ADDED TO INDEX	SJB
B	11/2014	HH-TJ-PF-22 & HH-TJ-PF-23 ADDED	SJB
A	11/2013	MAX. SCREED THICKNESS NOTE ADDED	SJB

These details have been produced for guidance only. It is the responsibility of the building designer to ensure that the details shown are compatible with the overall building design and will satisfy the relevant parts of the Building Regulations applicable before they are adopted into the project design.

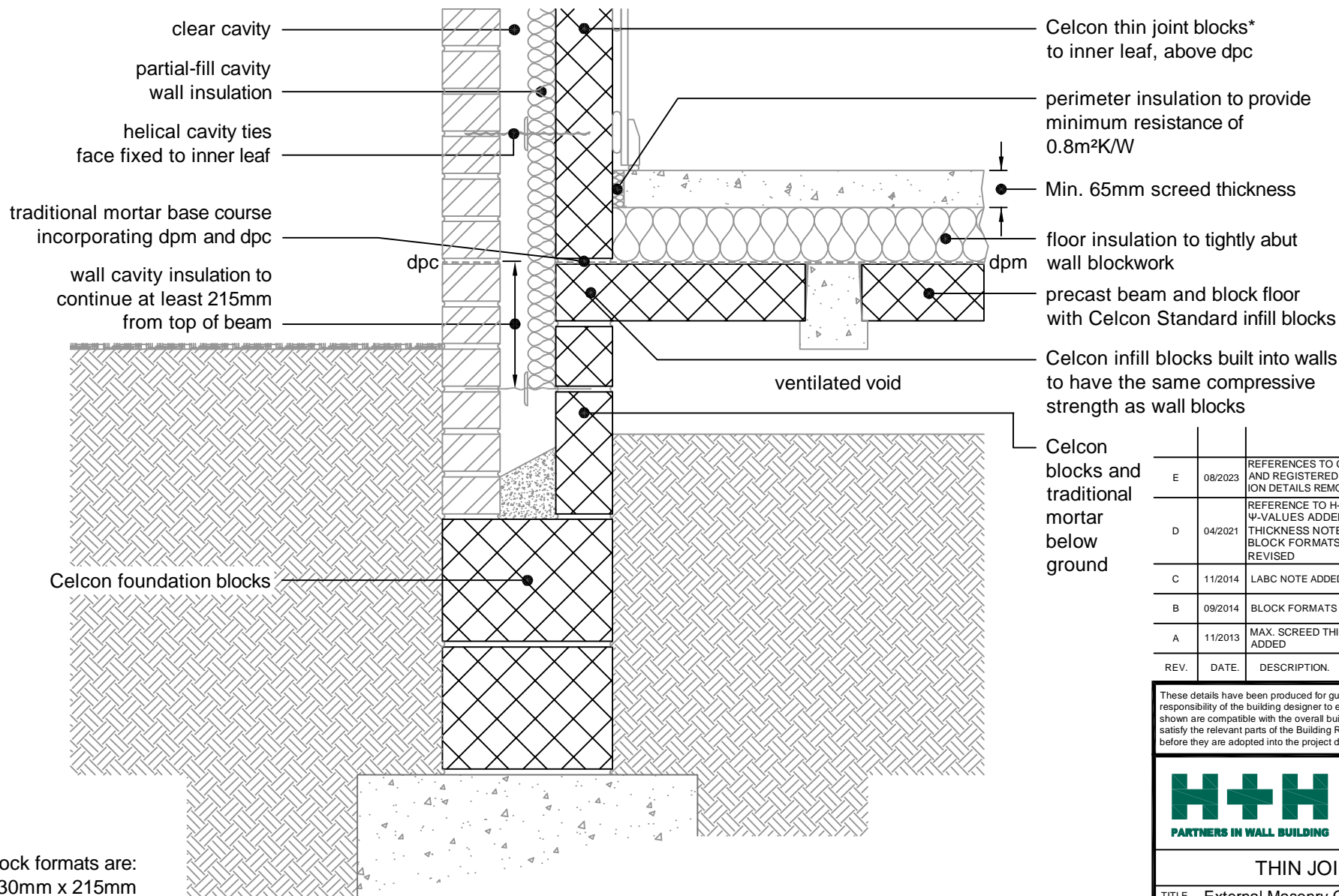


TITLE **Thin Joint Junction Details
(partial Fill)**

DWG No. **INDEX**

DRAWN BY **SJB** CHECKED BY **AHR**

DATE **Nov 2012** SCALE **N.T.S.** REV.NO. **E**



* Thin joint block formats are:
 Plus = 630mm x 215mm
 Jumbo Blok = 630mm x 250mm
 in 2mm Celfix mortar joints

This junction detail has been assessed by H+H UK Ltd. for thermal performance based on various Celcon blocks and insulation combinations. Applicable Ψ -values and minimum temperature factors compatible with the latest Building Regulations can be found in our 'H+H Calculated Ψ -values' document, available to download from our website www.hhcelcon.co.uk.

REV.	DATE	DESCRIPTION	BY.
E	08/2023	REFERENCES TO CONSTRUCTIVE AND REGISTERED CONSTRUCTION DETAILS REMOVED	SJB
D	04/2021	REFERENCE TO H+H CALCULATED Ψ -VALUES ADDED. SCREED THICKNESS NOTE REVISED. BLOCK FORMATS NOTE REVISED	SJB
C	11/2014	LABC NOTE ADDED	SJB
B	09/2014	BLOCK FORMATS NOTE REVISED	SJB
A	11/2013	MAX. SCREED THICKNESS NOTE ADDED	SJB

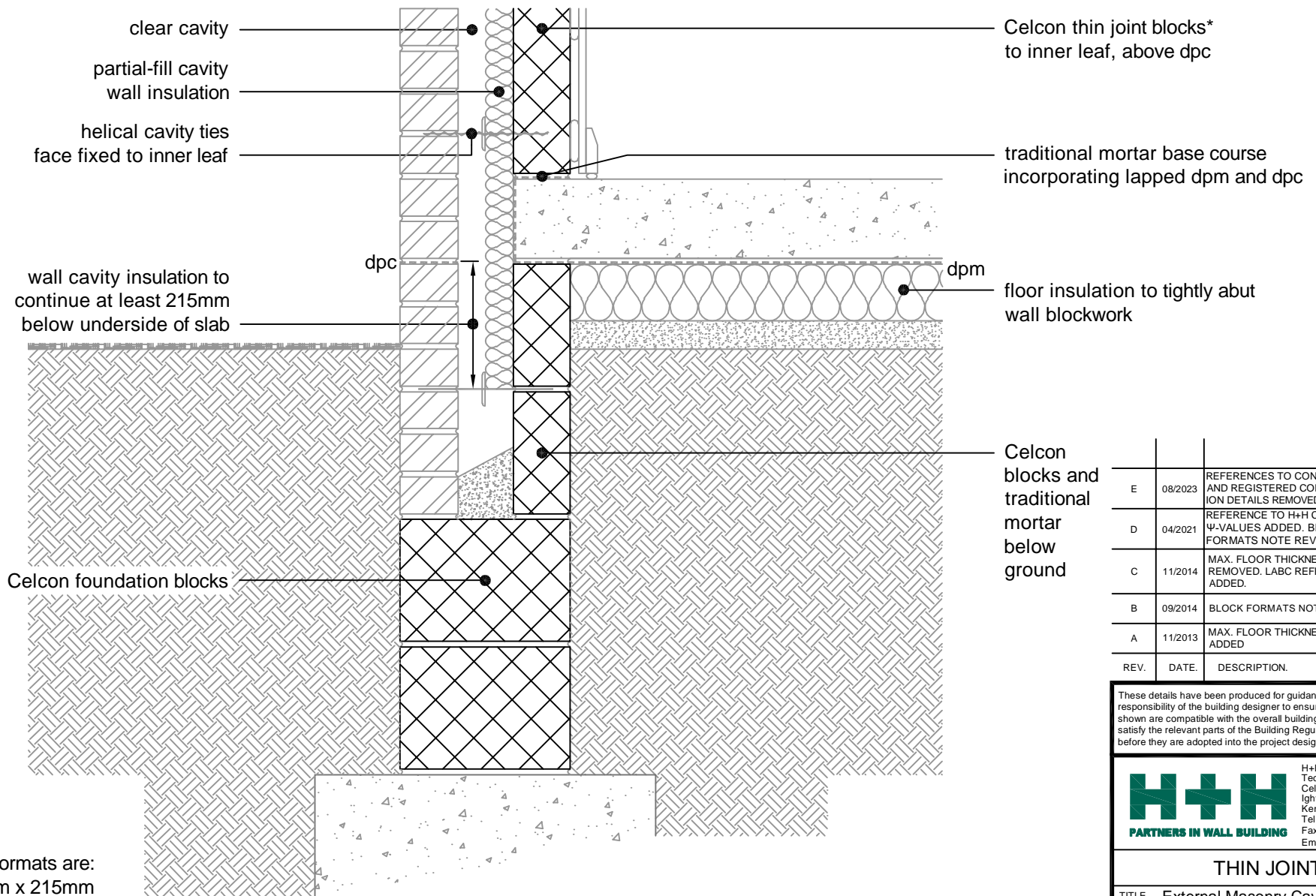
These details have been produced for guidance only. It is the responsibility of the building designer to ensure that the details shown are compatible with the overall building design and will satisfy the relevant parts of the Building Regulations applicable before they are adopted into the project design.



H+H UK Limited
 Technical Services Dept.
 Celcon House
 Ightham, Sevenoaks
 Kent, TN15 9HZ
 Tel +44 (0)1732 880580
 Fax +44 (0)1732 887013
 Email tsd@hhcelcon.co.uk

THIN JOINT

TITLE External Masonry Cavity Wall, Partial Fill - Suspended Beam And Block Floor, Insulation Above Slab		
DWG No. HH-TJ-PF-01		
DRAWN BY SJB	CHECKED BY AHR	
DATE Nov 2012	SCALE 1:100 @ A4	REV.NO. E



* Thin joint block formats are:
 Plus = 630mm x 215mm
 Jumbo Blok = 630mm x 250mm
 in 2mm Celfix mortar joints

This junction detail has been assessed by H+H UK Ltd. for thermal performance based on various Celcon blocks and insulation combinations. Applicable Ψ -values and minimum temperature factors compatible with the latest Building Regulations can be found in our 'H+H Calculated Ψ -values' document, available to download from our website www.hhcelcon.co.uk.

REV.	DATE	DESCRIPTION	BY.
E	08/2023	REFERENCES TO CONSTRUCTIVE AND REGISTERED CONSTRUCTION DETAILS REMOVED	SJB
D	04/2021	REFERENCE TO H+H CALCULATED Ψ -VALUES ADDED. BLOCK FORMATS NOTE REVISED.	SJB
C	11/2014	MAX. FLOOR THICKNESS NOTE REMOVED. LABC REFERENCE ADDED.	SJB
B	09/2014	BLOCK FORMATS NOTE REVISED	SJB
A	11/2013	MAX. FLOOR THICKNESS NOTE ADDED	SJB

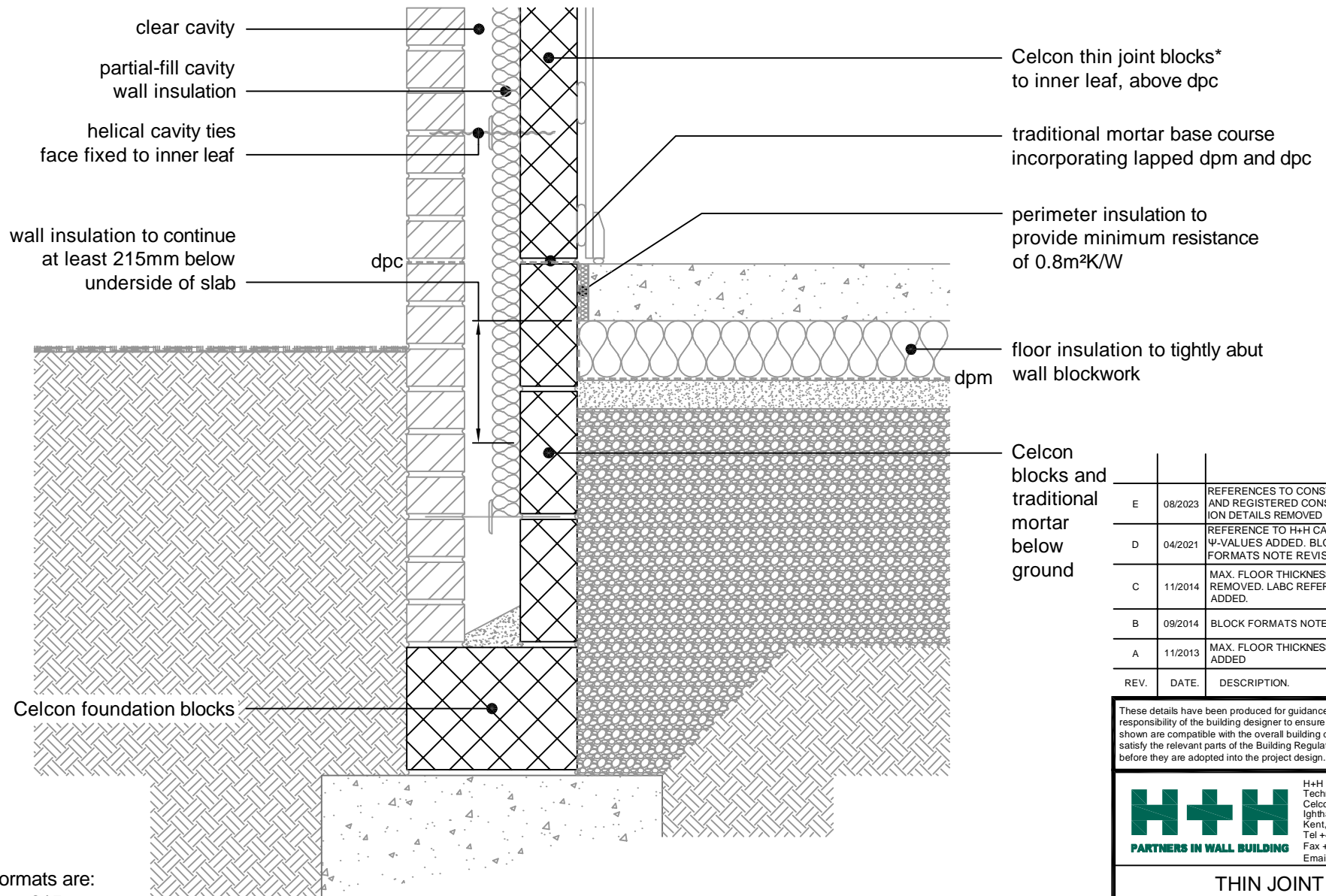
These details have been produced for guidance only. It is the responsibility of the building designer to ensure that the details shown are compatible with the overall building design and will satisfy the relevant parts of the Building Regulations applicable before they are adopted into the project design.

H+H PARTNERS IN WALL BUILDING

H+H UK Limited
 Technical Services Dept.
 Celcon House
 Ightham, Sevenoaks
 Kent, TN15 9HZ
 Tel +44 (0)1732 880580
 Fax +44 (0)1732 887013
 Email tsd@hhcelcon.co.uk

THIN JOINT

TITLE External Masonry Cavity Wall, Partial Fill - Suspended In-Situ Concrete Floor, Insulation Below Slab		
DWG No. HH-TJ-PF-02		
DRAWN BY	SJB	CHECKED BY AHR
DATE	Nov 2012	SCALE 1:100 @ A4
REV. NO.	E	



* Thin joint block formats are:
 Plus = 630mm x 215mm
 Jumbo Blok = 630mm x 250mm
 in 2mm Celfix mortar joints

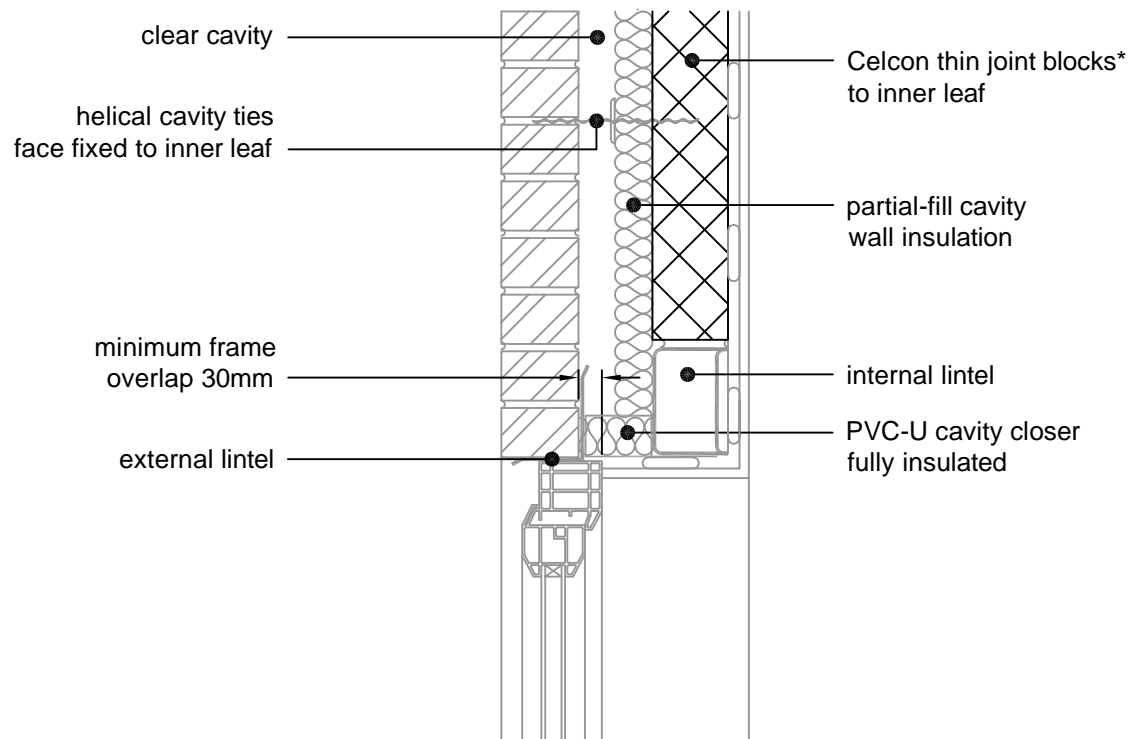
This junction detail has been assessed by H+H UK Ltd. for thermal performance based on various Celcon blocks and insulation combinations. Applicable Ψ -values and minimum temperature factors compatible with the latest Building Regulations can be found in our 'H+H Calculated Ψ -values' document, available to download from our website www.hhcelcon.co.uk.

REV.	DATE.	DESCRIPTION.	BY.
E	08/2023	REFERENCES TO CONSTRUCTIVE AND REGISTERED CONSTRUCTION DETAILS REMOVED	SJB
D	04/2021	REFERENCE TO H+H CALCULATED Ψ -VALUES ADDED. BLOCK FORMATS NOTE REVISED.	SJB
C	11/2014	MAX. FLOOR THICKNESS NOTE REMOVED. LABC REFERENCE ADDED.	SJB
B	09/2014	BLOCK FORMATS NOTE REVISED	SJB
A	11/2013	MAX. FLOOR THICKNESS NOTE ADDED	SJB

These details have been produced for guidance only. It is the responsibility of the building designer to ensure that the details shown are compatible with the overall building design and will satisfy the relevant parts of the Building Regulations applicable before they are adopted into the project design.

H+H H+H UK Limited
 Technical Services Dept.
 Celcon House
 Ightham, Sevenoaks
 Kent, TN15 9HZ
 Tel +44 (0)1732 880580
 Fax +44 (0)1732 887013
 Email tsd@hhcelcon.co.uk
PARTNERS IN WALL BUILDING

THIN JOINT		
TITLE External Masonry Cavity Wall, Partial Fill - Concrete Ground Bearing Floor, Insulation Below Slab		
DWG No. HH-TJ-PF-03		
DRAWN BY	SJB	CHECKED BY AHR
DATE	Nov 2012	SCALE 1:100 @ A4
REV. NO.	E	



* Thin joint block formats are:
 Plus = 630mm x 215mm
 Jumbo Blok = 630mm x 250mm
 in 2mm Celfix mortar joints

This junction detail has been assessed by H+H UK Ltd. for thermal performance based on various Celcon blocks and insulation combinations. Applicable Ψ -values and minimum temperature factors compatible with the latest Building Regulations can be found in our 'H+H Calculated Ψ -values' document, available to download from our website www.hhcelcon.co.uk.

REV.	DATE	DESCRIPTION	BY.
D	08/2023	REFERENCES TO CONSTRUCTIVE AND REGISTERED CONSTRUCTION DETAILS REMOVED	SJB
C	04/2021	REFERENCE TO H+H CALCULATED Ψ -VALUES ADDED. BLOCK FORMATS NOTE REVISED.	SJB
B	11/2014	LABC NOTE ADDED	SJB
A	09/2014	BLOCK FORMATS NOTE REVISED	SJB

These details have been produced for guidance only. It is the responsibility of the building designer to ensure that the details shown are compatible with the overall building design and will satisfy the relevant parts of the Building Regulations applicable before they are adopted into the project design.


H+H UK Limited
 Technical Services Dept.
 Celcon House
 Ightham, Sevenoaks
 Kent, TN15 9HZ
 Tel +44 (0)1732 880580
 Fax +44 (0)1732 887013
 Email tsd@hhcelcon.co.uk

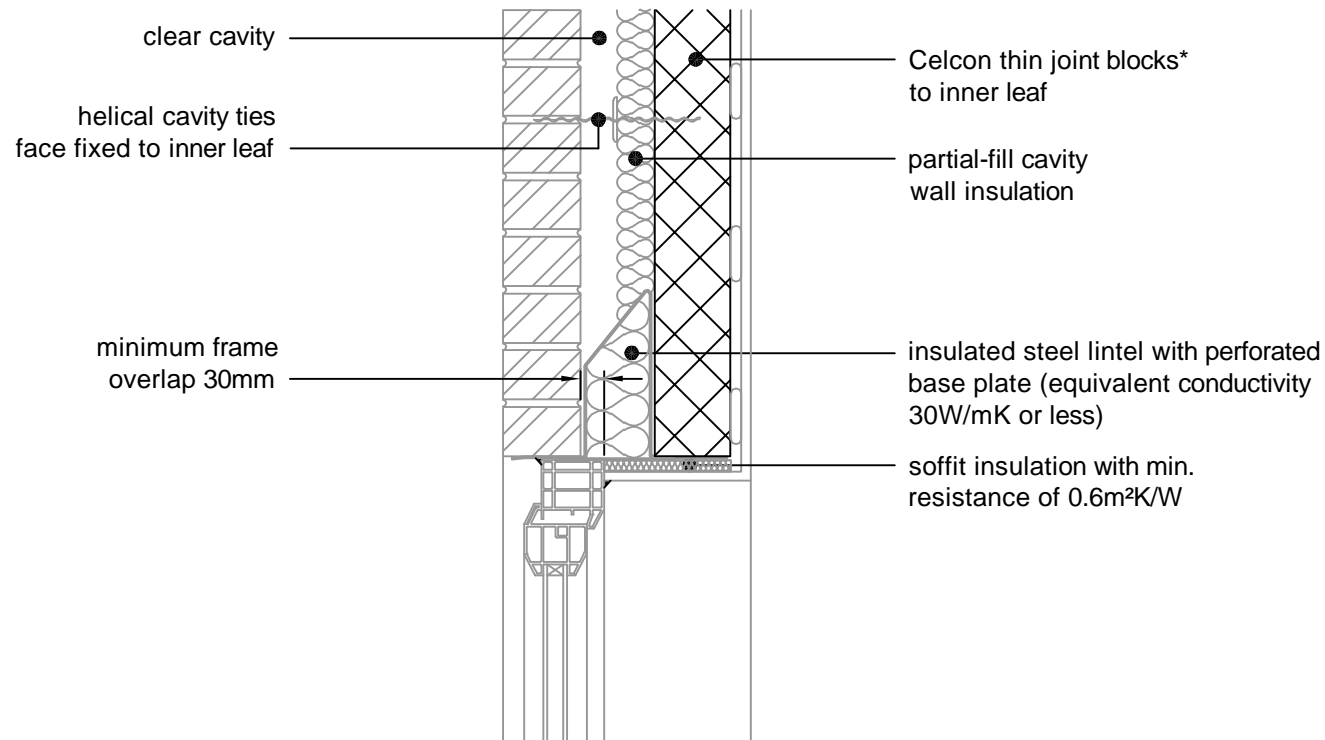
THIN JOINT

TITLE
 External Masonry Cavity Wall,
 Partial Fill - Independent Lintel

DWG No. **HH-TJ-PF-04**

DRAWN BY **SJB** CHECKED BY **AHR**

DATE **Nov 2012** SCALE **1:100 @ A4** REV. NO. **D**



* Thin joint block formats are:
 Plus = 630mm x 215mm
 Jumbo Blok = 630mm x 250mm
 in 2mm Celfix mortar joints

This junction detail has been assessed by H+H UK Ltd. for thermal performance based on various Celcon blocks and insulation combinations. Applicable Ψ -values and minimum temperature factors compatible with the latest Building Regulations can be found in our 'H+H Calculated Ψ -values' document, available to download from our website www.hhcelcon.co.uk.

REV.	DATE	DESCRIPTION	BY.
D	08/2023	REFERENCES TO CONSTRUCTIVE AND REGISTERED CONSTRUCTION DETAILS REMOVED	SJB
C	04/2021	REFERENCE TO H+H CALCULATED Ψ -VALUES ADDED. BLOCK FORMATS NOTE REVISED.	SJB
B	11/2014	MAX. LINTEL HEIGHT NOTE REMOVED. LINTEL BASEPLATE ADDED. LABC REFERENCE ADDED	SJB
A	09/2014	BLOCK FORMATS NOTE REVISED	SJB

These details have been produced for guidance only. It is the responsibility of the building designer to ensure that the details shown are compatible with the overall building design and will satisfy the relevant parts of the Building Regulations applicable before they are adopted into the project design.



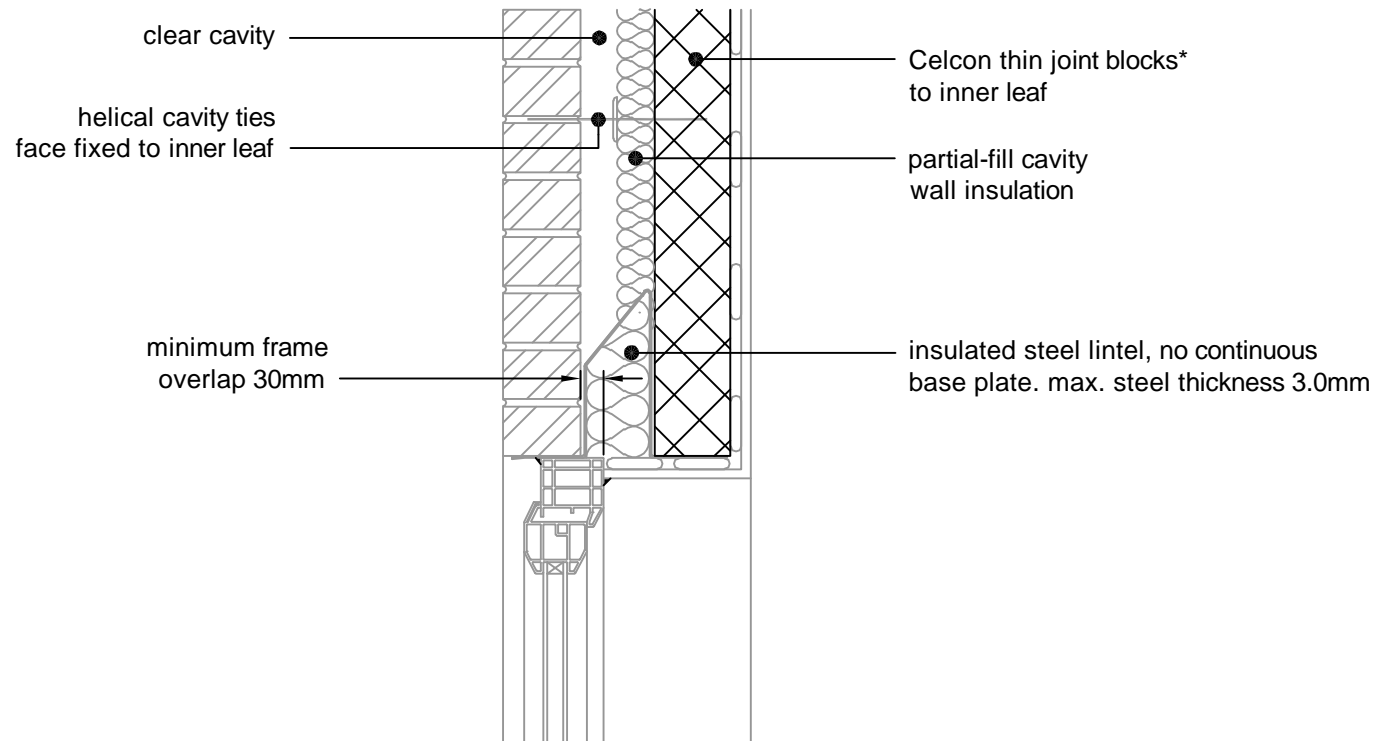
THIN JOINT

TITLE External Masonry Cavity Wall,
 Partial Fill - Steel Lintel, Perforated
 Base Plate, (Insulated Soffit)

DWG No. HH-TJ-PF-05

DRAWN BY SJB CHECKED BY AHR

DATE Nov 2012 SCALE 1:100 @ A4 REV. NO. D



* Thin joint block formats are:
 Plus = 630mm x 215mm
 Jumbo Blok = 630mm x 250mm
 in 2mm Celfix mortar joints

This junction detail has been assessed by H+H UK Ltd. for thermal performance based on various Celcon blocks and insulation combinations. Applicable Ψ -values and minimum temperature factors compatible with the latest Building Regulations can be found in our 'H+H Calculated Ψ -values' document, available to download from our website www.hhcelcon.co.uk.

REV.	DATE	DESCRIPTION	BY.
B	08/2023	REFERENCES TO CONSTRUCTIVE AND REGISTERED CONSTRUCTION DETAILS REMOVED	SJB
A	04/2021	REFERENCE TO H+H CALCULATED Ψ -VALUES ADDED. BLOCK FORMATS NOTE REVISED.	SJB

These details have been produced for guidance only. It is the responsibility of the building designer to ensure that the details shown are compatible with the overall building design and will satisfy the relevant parts of the Building Regulations applicable before they are adopted into the project design.



H+H UK Limited
 Technical Services Dept.
 Celcon House
 Ightham, Sevenoaks
 Kent, TN15 9HZ.
 Tel +44 (0)1732 880580
 Fax +44 (0)1732 887013
 Email tsd@hhcelcon.co.uk

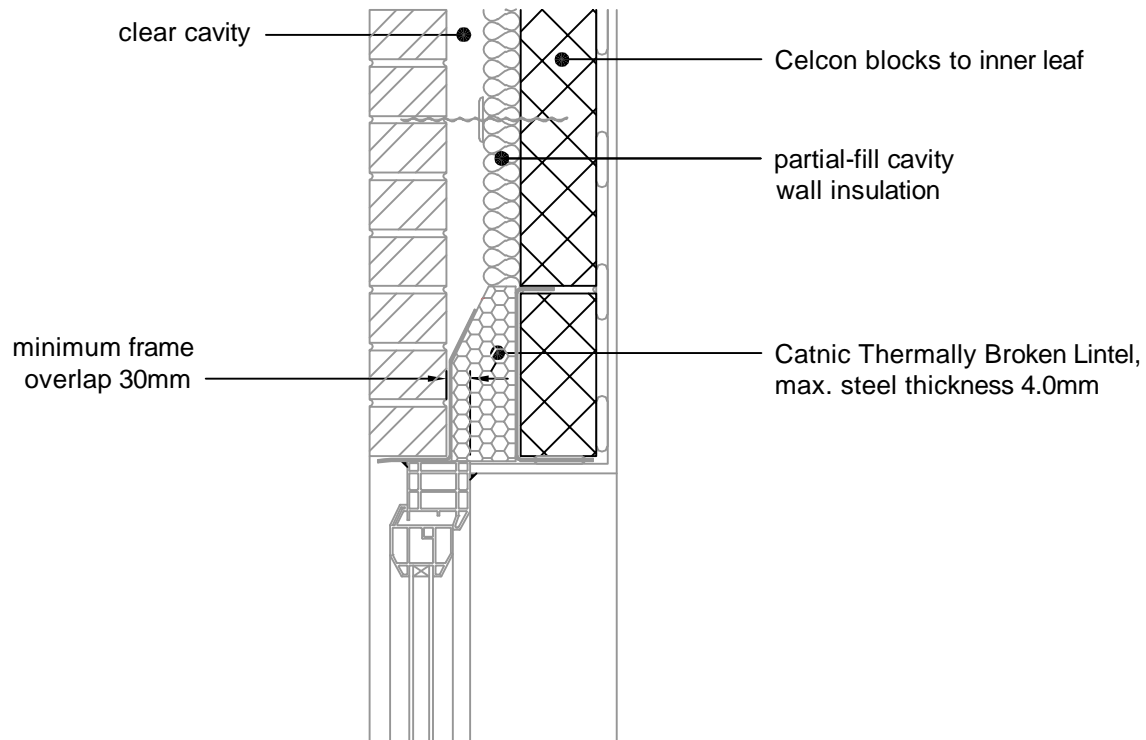
THIN JOINT

TITLE External Masonry Cavity Wall,
 Partial Fill - Steel Lintel, Open Back
 (no continuous base plate)

DWG No. HH-TJ-PF-22

DRAWN BY SJB CHECKED BY AHR

DATE Nov 2014 SCALE 1:100 @ A4 REV.NO. B



* Thin joint block formats are:
 Plus = 630mm x 215mm
 Jumbo Blok = 630mm x 250mm
 in 2mm Celfix mortar joints

This junction detail has been assessed by H+H UK Ltd. for thermal performance based on various Celcon blocks and insulation combinations. Applicable Ψ -values and minimum temperature factors compatible with the latest Building Regulations can be found in our 'H+H Calculated Ψ -values' document, available to download from our website www.hhcelcon.co.uk.

REV.	DATE	DESCRIPTION	BY.
A	08/2023	REFERENCES TO CONSTRUCTIVE AND REGISTERED CONSTRUCTION DETAILS REMOVED	SJB

These details have been produced for guidance only. It is the responsibility of the building designer to ensure that the details shown are compatible with the overall building design and will satisfy the relevant parts of the Building Regulations applicable before they are adopted into the project design.



H+H UK Limited
 Technical Services Dept.
 Celcon House
 Ightham, Sevenoaks
 Kent, TN15 9HZ.
 Tel +44 (0)1732 880580
 Fax +44 (0)1732 887013
 Email tsd@hhcelcon.co.uk

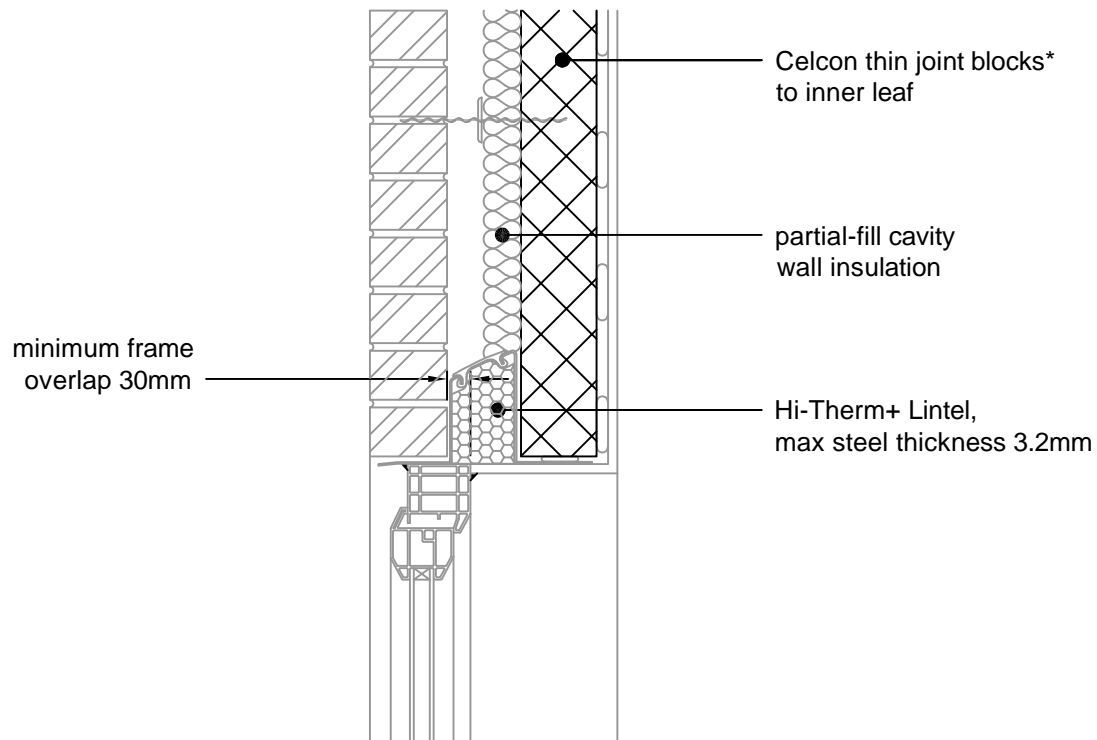
THIN JOINT

TITLE External Masonry Cavity Wall,
 Partial Fill - Catnic
 Thermally Broken Lintel

DWG No. HH-TJ-PF-26

DRAWN BY SJB CHECKED BY AHR

DATE Apr 2021 SCALE 1:100 @ A4 REV.NO. A



* Thin joint block formats are:
 Plus = 630mm x 215mm
 Jumbo Blok = 630mm x 250mm
 in 2mm Celfix mortar joints

This junction detail has been assessed by H+H UK Ltd. for thermal performance based on various Celcon blocks and insulation combinations. Applicable Ψ -values and minimum temperature factors compatible with the latest Building Regulations can be found in our 'H+H Calculated Ψ -values' document, available to download from our website www.hhcelcon.co.uk.

REV.	DATE.	DESCRIPTION.	BY.

These details have been produced for guidance only. It is the responsibility of the building designer to ensure that the details shown are compatible with the overall building design and will satisfy the relevant parts of the Building Regulations applicable before they are adopted into the project design.



H+H UK Limited
 Technical Services Dept.
 Celcon House
 Ightham, Sevenoaks
 Kent, TN15 9HZ
 Tel +44 (0)1732 880580
 Fax +44 (0)1732 887013
 Email tsd@hhcelcon.co.uk

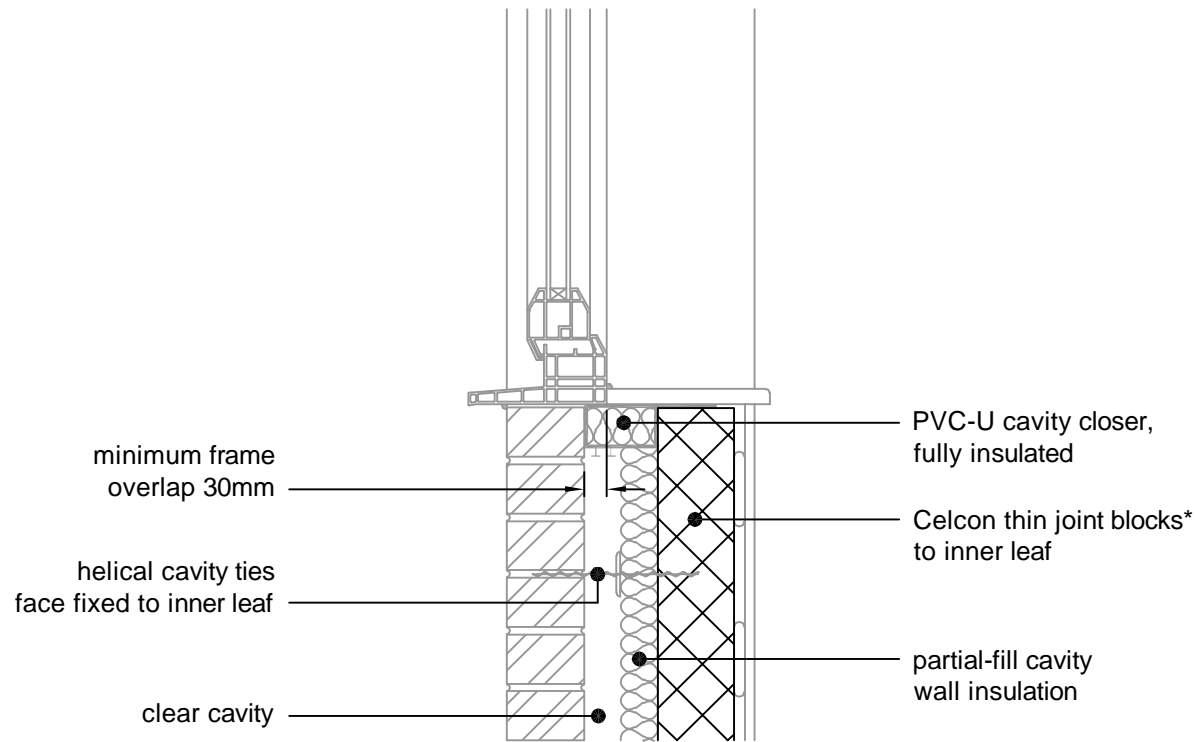
THIN JOINT

TITLE External Masonry Cavity Wall,
 Partial Fill - Hi-Therm+
 Thermally Broken Lintel

DWG No. HH-TJ-PF-27

DRAWN BY **SJB** CHECKED BY **AHR**

DATE **Aug 2023** SCALE **1:100 @ A4** REV.NO. **0**



* Thin joint block formats are:
 Plus = 630mm x 215mm
 Jumbo Blok = 630mm x 250mm
 in 2mm Celfix mortar joints

This junction detail has been assessed by H+H UK Ltd. for thermal performance based on various Celcon blocks and insulation combinations. Applicable Ψ -values and minimum temperature factors compatible with the latest Building Regulations can be found in our 'H+H Calculated Ψ -values' document, available to download from our website www.hhcelcon.co.uk.

REV.	DATE	DESCRIPTION	BY.
D	08/2023	REFERENCES TO CONSTRUCTIVE AND REGISTERED CONSTRUCTION DETAILS REMOVED	SJB
C	04/2021	REFERENCE TO H+H CALCULATED Ψ -VALUES ADDED. BLOCK FORMATS NOTE REVISED.	SJB
B	11/2014	LABC NOTE ADDED	SJB
A	09/2014	BLOCK FORMATS NOTE REVISED	SJB

These details have been produced for guidance only. It is the responsibility of the building designer to ensure that the details shown are compatible with the overall building design and will satisfy the relevant parts of the Building Regulations applicable before they are adopted into the project design.



H+H UK Limited
 Technical Services Dept.
 Celcon House
 Ightham, Sevenoaks
 Kent, TN15 9HZ.
 Tel +44 (0)1732 880580
 Fax +44 (0)1732 887013
 Email tsd@hhcelcon.co.uk

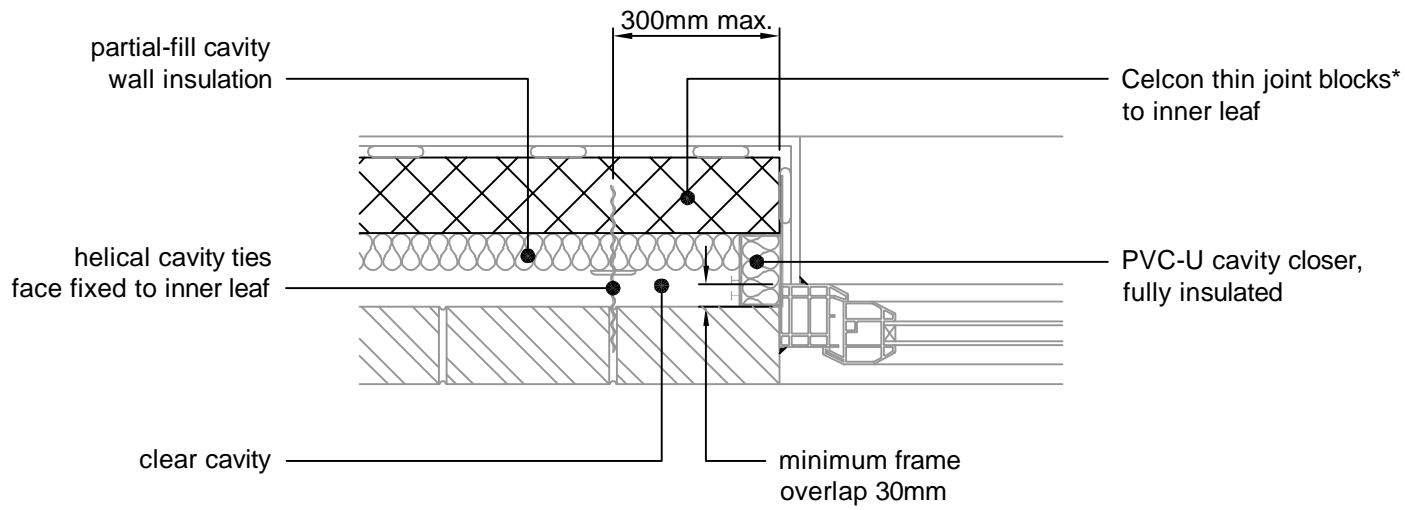
THIN JOINT

TITLE
 External Masonry Cavity Wall,
 Partial Fill - Sill

DWG No. HH-TJ-PF-06

DRAWN BY SJB CHECKED BY AHR

DATE Nov 2012 SCALE 1:100 @ A4 REV.NO. D



* Thin joint block formats are:
 Plus = 630mm x 215mm
 Jumbo Blok = 630mm x 250mm
 in 2mm Celfix mortar joints

This junction detail has been assessed by H+H UK Ltd. for thermal performance based on various Celcon blocks and insulation combinations. Applicable Ψ -values and minimum temperature factors compatible with the latest Building Regulations can be found in our 'H+H Calculated Ψ -values' document, available to download from our website www.hhcelcon.co.uk.

REV.	DATE	DESCRIPTION	BY.
D	08/2023	REFERENCES TO CONSTRUCTIVE AND REGISTERED CONSTRUCTION DETAILS REMOVED	SJB
C	04/2021	REFERENCE TO H+H CALCULATED Ψ -VALUES ADDED. BLOCK FORMATS NOTE REVISED.	SJB
B	11/2014	LABC NOTE ADDED	SJB
A	09/2014	BLOCK FORMATS NOTE REVISED	SJB

These details have been produced for guidance only. It is the responsibility of the building designer to ensure that the details shown are compatible with the overall building design and will satisfy the relevant parts of the Building Regulations applicable before they are adopted into the project design.



H+H UK Limited
 Technical Services Dept.
 Celcon House
 Ightham, Sevenoaks
 Kent, TN15 9HZ.
 Tel +44 (0)1732 880580
 Fax +44 (0)1732 887013
 Email tsd@hhcelcon.co.uk

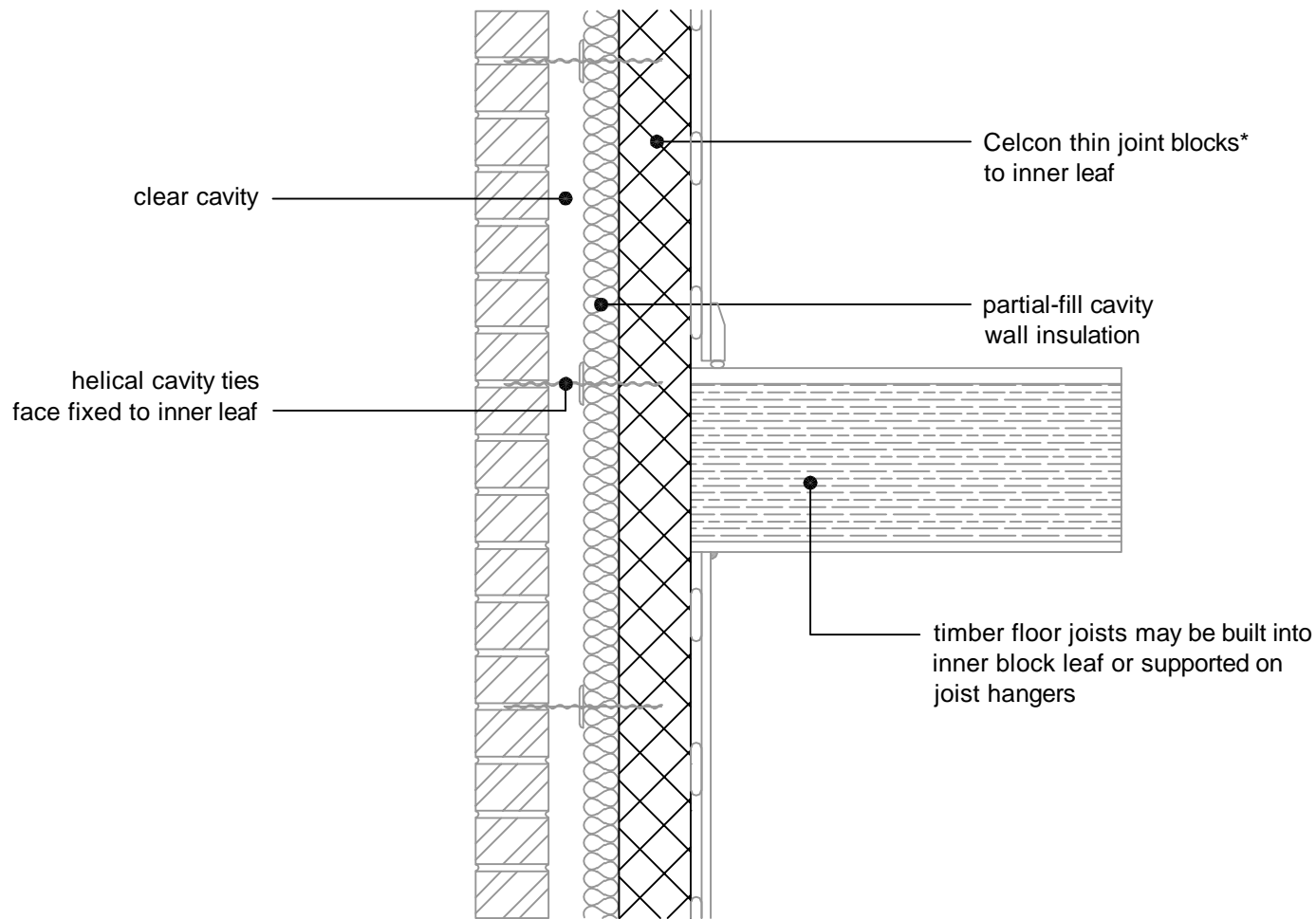
THIN JOINT

TITLE
 External Masonry Cavity Wall,
 Partial Fill - Jamb

DWG No. HH-TJ-PF-07

DRAWN BY SJB CHECKED BY AHR

DATE Nov 2012 SCALE 1:100 @ A4 REV.NO. D



* Thin joint block formats are:
 Plus = 630mm x 215mm
 Jumbo Blok = 630mm x 250mm
 in 2mm Celfix mortar joints

This junction detail has been assessed by H+H UK Ltd. for thermal performance based on various Celcon blocks and insulation combinations. Applicable Ψ -values and minimum temperature factors compatible with the latest Building Regulations can be found in our 'H+H Calculated Ψ -values' document, available to download from our website www.hhcelcon.co.uk.

REV.	DATE	DESCRIPTION	BY.
D	08/2023	REFERENCES TO CONSTRUCTIVE AND REGISTERED CONSTRUCTION DETAILS REMOVED	SJB
C	04/2021	REFERENCE TO H+H CALCULATED Ψ -VALUES ADDED. BLOCK FORMATS NOTE REVISED.	SJB
B	11/2014	LABC NOTE ADDED	SJB
A	09/2014	BLOCK FORMATS NOTE REVISED	SJB

These details have been produced for guidance only. It is the responsibility of the building designer to ensure that the details shown are compatible with the overall building design and will satisfy the relevant parts of the Building Regulations applicable before they are adopted into the project design.



H+H UK Limited
 Technical Services Dept.
 Celcon House
 Ightham, Sevenoaks
 Kent, TN15 9HZ.
 Tel +44 (0)1732 880580
 Fax +44 (0)1732 887013
 Email tsd@hhcelcon.co.uk

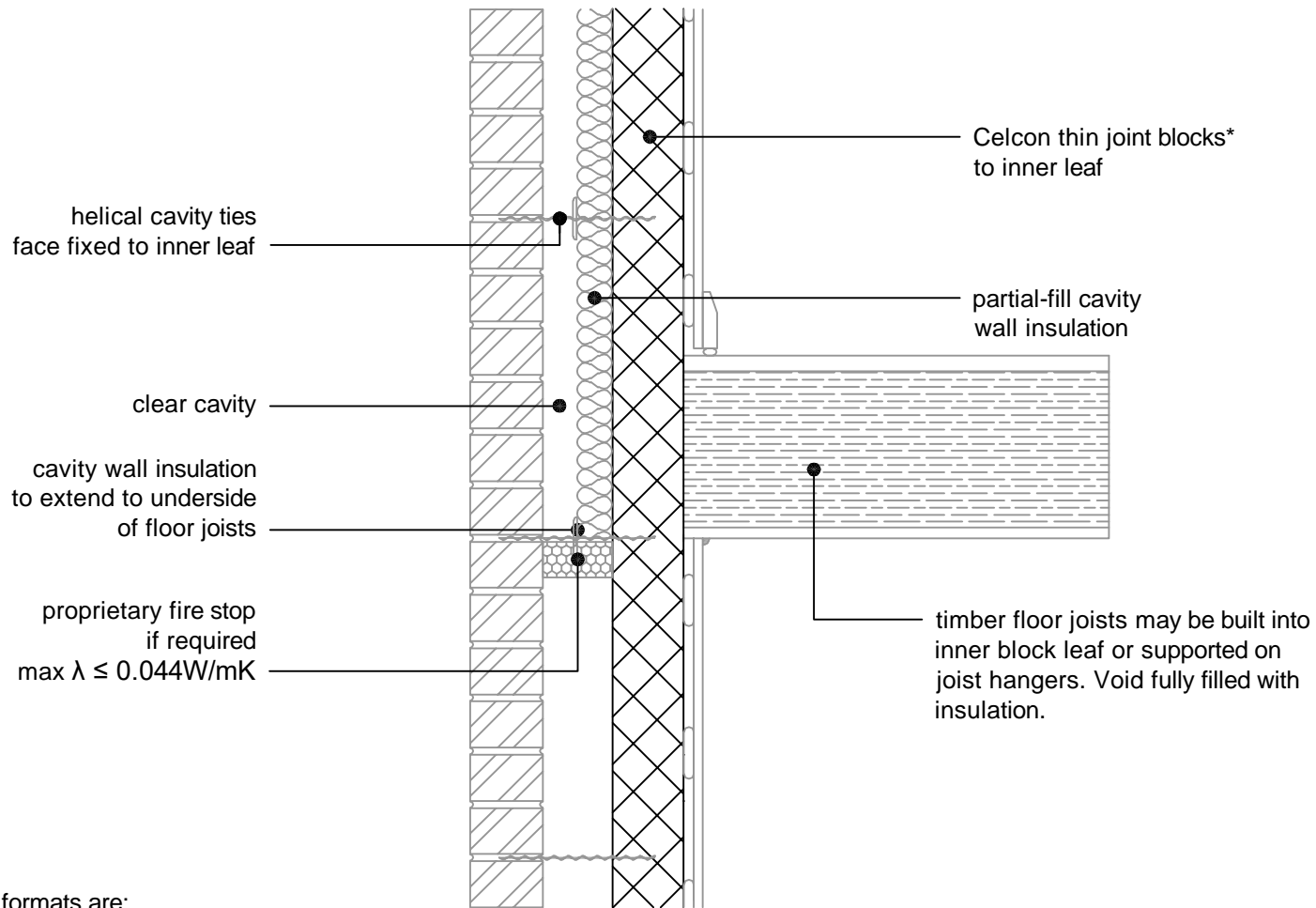
THIN JOINT

TITLE External Masonry Cavity Wall,
 Partial Fill - Intermediate Timber Floor
 Within A Dwelling

DWG No. HH-TJ-PF-08

DRAWN BY SJB CHECKED BY AHR

DATE Nov 2012 SCALE 1:100 @ A4 REV.NO. D



* Thin joint block formats are:
 Plus = 630mm x 215mm
 Jumbo Blok = 630mm x 250mm
 in 2mm Celfix mortar joints

This junction detail has been assessed by H+H UK Ltd. for thermal performance based on various Celcon blocks and insulation combinations. Applicable Ψ -values and minimum temperature factors compatible with the latest Building Regulations can be found in our 'H+H Calculated Ψ -values' document, available to download from our website www.hhcelcon.co.uk.

REV.	DATE	DESCRIPTION	BY.
A	08/2023	REFERENCES TO CONSTRUCTIVE AND REGISTERED CONSTRUCTION DETAILS REMOVED	SJB

These details have been produced for guidance only. It is the responsibility of the building designer to ensure that the details shown are compatible with the overall building design and will satisfy the relevant parts of the Building Regulations applicable before they are adopted into the project design.



H+H UK Limited
 Technical Services Dept.
 Celcon House
 Ightham, Sevenoaks
 Kent, TN15 9HZ
 Tel +44 (0)1732 880580
 Fax +44 (0)1732 887013
 Email tsd@hhcelcon.co.uk

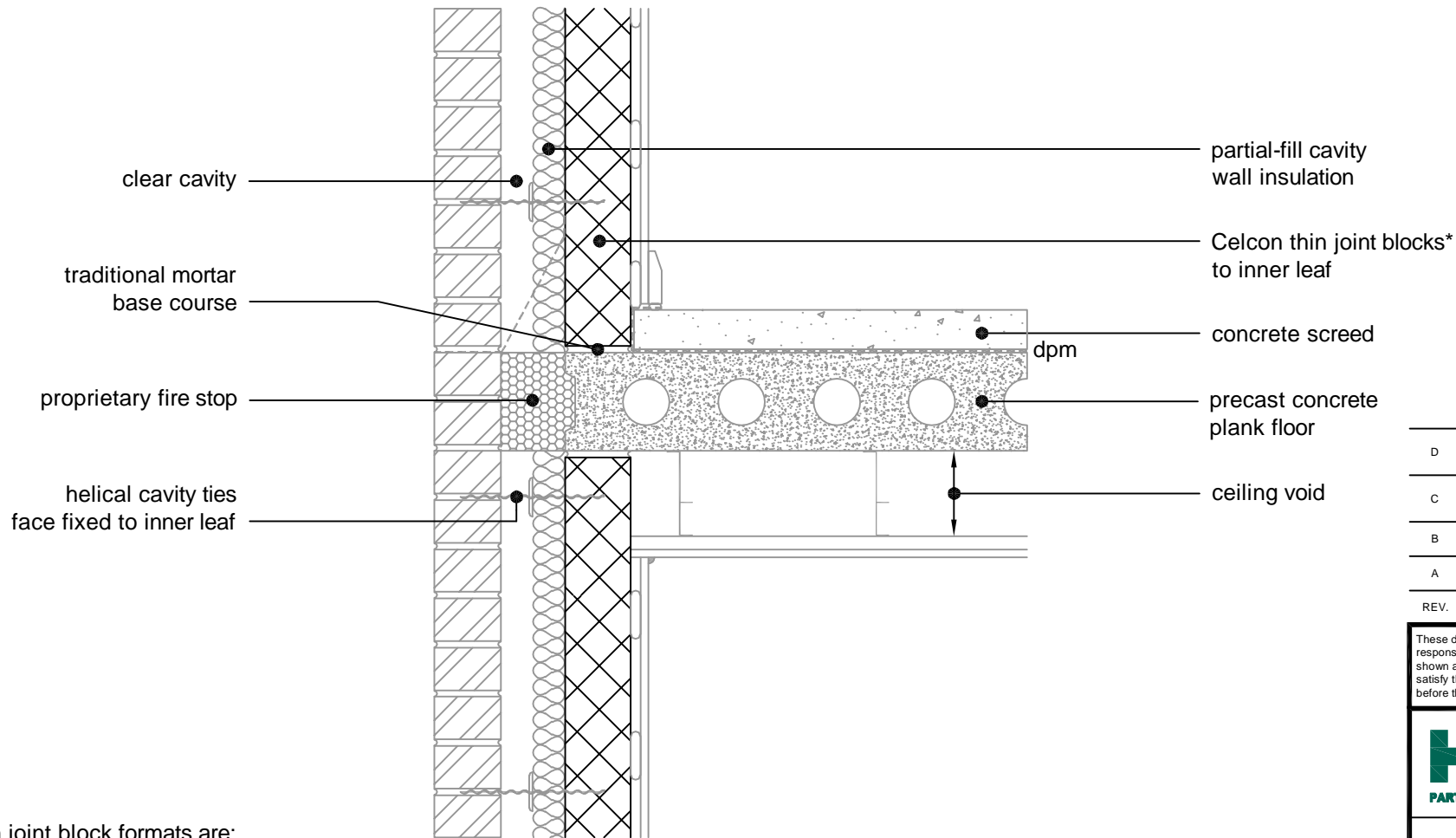
THIN JOINT

TITLE External Masonry Cavity Wall,
 Partial Fill - Intermediate Timber Floor,
 Insulated (over exposed area)

DWG No. HH-TJ-PF-25

DRAWN BY SJB CHECKED BY AHR

DATE Apr 2021 SCALE 1:100 @ A4 REV.NO. A



* Thin joint block formats are:
 Plus = 630mm x 215mm
 Jumbo Blok = 630mm x 250mm
 in 2mm Celfix mortar joints

This junction detail has been assessed by H+H UK Ltd. for thermal performance based on various Celcon blocks and insulation combinations. Applicable Ψ -values and minimum temperature factors compatible with the latest Building Regulations can be found in our 'H+H Calculated Ψ -values' document, available to download from our website www.hhcelcon.co.uk.

REV.	DATE	DESCRIPTION	BY.
D	08/2023	REFERENCES TO CONSTRUCTIVE AND REGISTERED CONSTRUCTION DETAILS REMOVED	SJB
C	04/2021	REFERENCE TO H+H CALCULATED Ψ -VALUES ADDED. BLOCK FORMATS NOTE REVISED.	SJB
B	11/2014	PROPRIETARY FIRE STOP NOTE REVISED. LABC NOTE ADDED.	SJB
A	09/2014	BLOCK FORMATS NOTE REVISED	SJB

These details have been produced for guidance only. It is the responsibility of the building designer to ensure that the details shown are compatible with the overall building design and will satisfy the relevant parts of the Building Regulations applicable before they are adopted into the project design.



H+H UK Limited
 Technical Services Dept.
 Celcon House
 Ightham, Sevenoaks
 Kent, TN15 9HZ.
 Tel +44 (0)1732 880580
 Fax +44 (0)1732 887013
 Email tsd@hhcelcon.co.uk

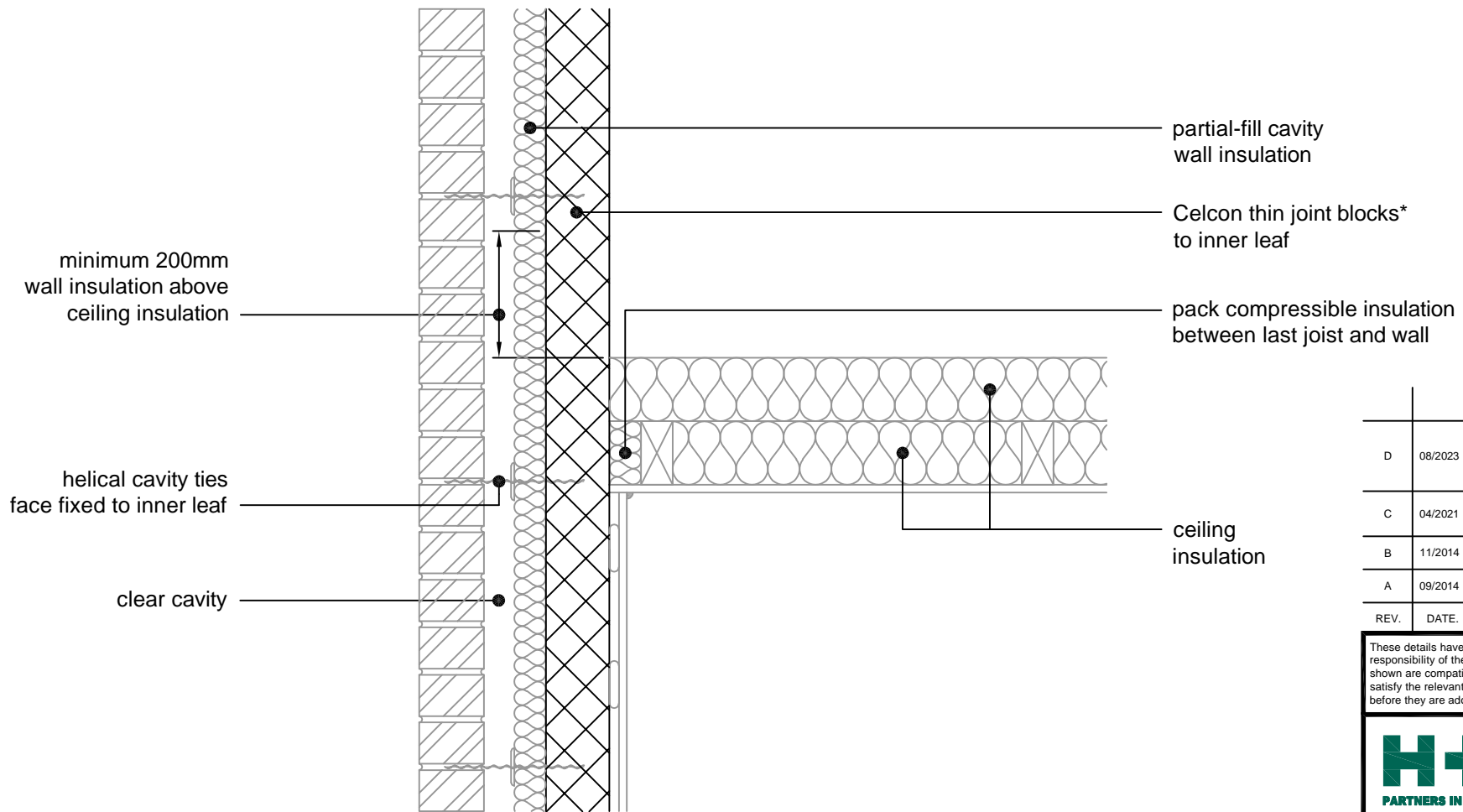
THIN JOINT

TITLE External Masonry Cavity Wall,
 Partial Fill - Precast Concrete Separating
 Floor Between Dwellings

DWG No. HH-TJ-PF-09

DRAWN BY SJB CHECKED BY AHR

DATE Nov 2012 SCALE 1:100 @ A4 REV. NO. D



* Thin joint block formats are:
 Plus = 630mm x 215mm
 Jumbo Blok = 630mm x 250mm
 in 2mm Celfix mortar joints

This junction detail has been assessed by H+H UK Ltd. for thermal performance based on various Celcon blocks and insulation combinations. Applicable Ψ -values and minimum temperature factors compatible with the latest Building Regulations can be found in our 'H+H Calculated Ψ -values' document, available to download from our website www.hhcelcon.co.uk.

REV.	DATE	DESCRIPTION	BY.
D	08/2023	REFERENCES TO CONSTRUCTIVE AND REGISTERED CONSTRUCTION DETAILS REMOVED. INSULATION BEHIND LAST JOIST LOWERED TO FLUSH WITH JOIST	SJB
C	04/2021	REFERENCE TO H+H CALCULATED Ψ -VALUES ADDED. BLOCK FORMATS NOTE REVISED.	SJB
B	11/2014	LABC NOTE ADDED	SJB
A	09/2014	BLOCK FORMATS NOTE REVISED	SJB

These details have been produced for guidance only. It is the responsibility of the building designer to ensure that the details shown are compatible with the overall building design and will satisfy the relevant parts of the Building Regulations applicable before they are adopted into the project design.


H+H UK Limited
 Technical Services Dept.
 Celcon House
 Ightham, Sevenoaks
 Kent, TN15 9HZ
 Tel +44 (0)1732 880580
 Fax +44 (0)1732 887013
 Email tsd@hhcelcon.co.uk
PARTNERS IN WALL BUILDING

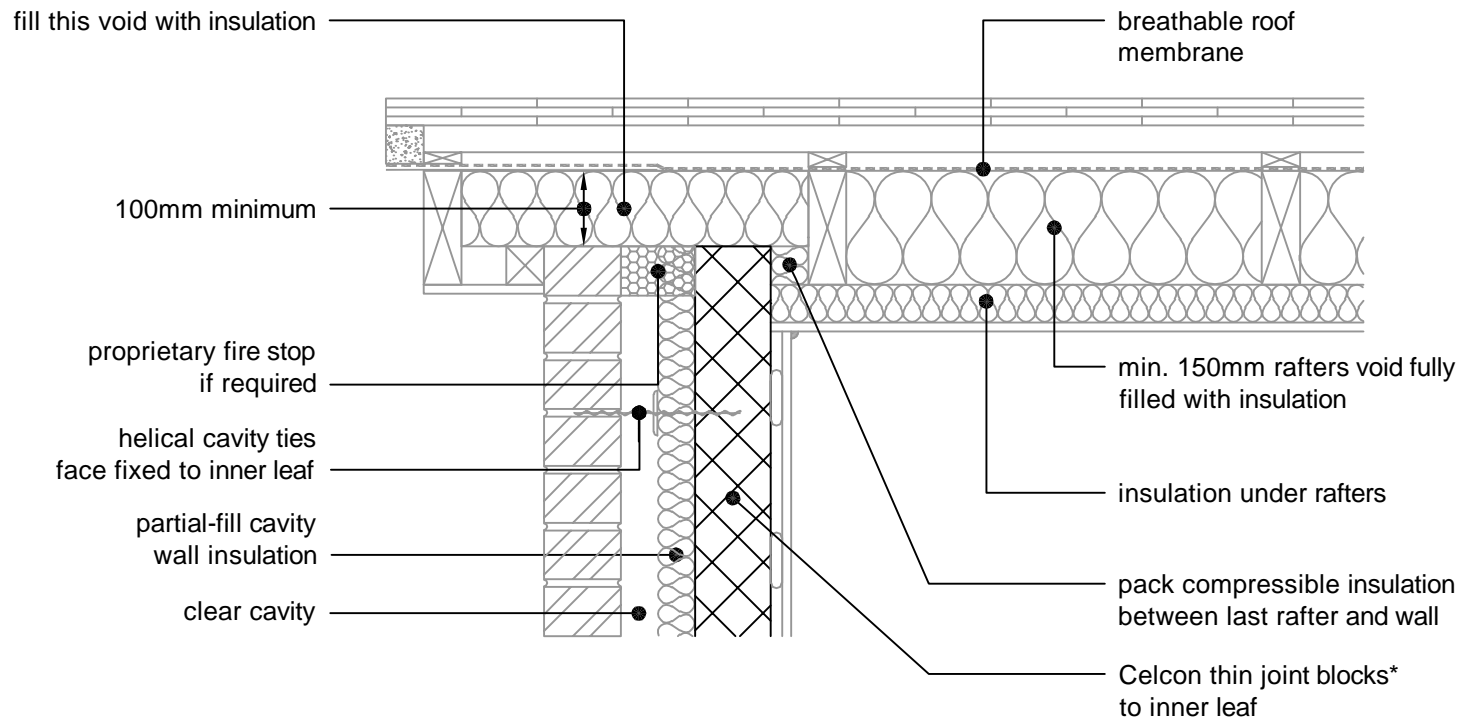
THIN JOINT

TITLE External Masonry Cavity Wall,
 Partial Fill - Pitched Roof, Gable -
 Insulation At Ceiling Level, Ventilated Loft

DWG No. **HH-TJ-PF-10**

DRAWN BY **SJB** CHECKED BY **AHR**

DATE **Nov 2012** SCALE **1:100 @ A4** REV.NO. **D**



* Thin joint block formats are:
 Plus = 630mm x 215mm
 Jumbo Blok = 630mm x 250mm
 in 2mm Celfix mortar joints

This junction detail has been assessed by H+H UK Ltd. for thermal performance based on various Celcon blocks and insulation combinations. Applicable Ψ -values and minimum temperature factors compatible with the latest Building Regulations can be found in our 'H+H Calculated Ψ -values' document, available to download from our website www.hhcelcon.co.uk.

REV.	DATE	DESCRIPTION	BY.
E	08/2023	REFERENCES TO CONSTRUCTIVE AND REGISTERED CONSTRUCTION DETAILS REMOVED	SJB
D	04/2021	REFERENCE TO H+H CALCULATED Ψ -VALUES ADDED. BLOCK FORMATS NOTE REVISED.	SJB
C	11/2014	LABC NOTE ADDED	SJB
B	09/2014	BLOCK FORMATS NOTE REVISED	SJB
A	11/2013	RAFTERS INSULATION THICKNESS NOTE ADDED	SJB

These details have been produced for guidance only. It is the responsibility of the building designer to ensure that the details shown are compatible with the overall building design and will satisfy the relevant parts of the Building Regulations applicable before they are adopted into the project design.


H+H UK Limited
 Technical Services Dept.
 Celcon House
 Ightham, Sevenoaks
 Kent, TN15 9HZ.
 Tel +44 (0)1732 880580
 Fax +44 (0)1732 887013
 Email tsd@hhcelcon.co.uk

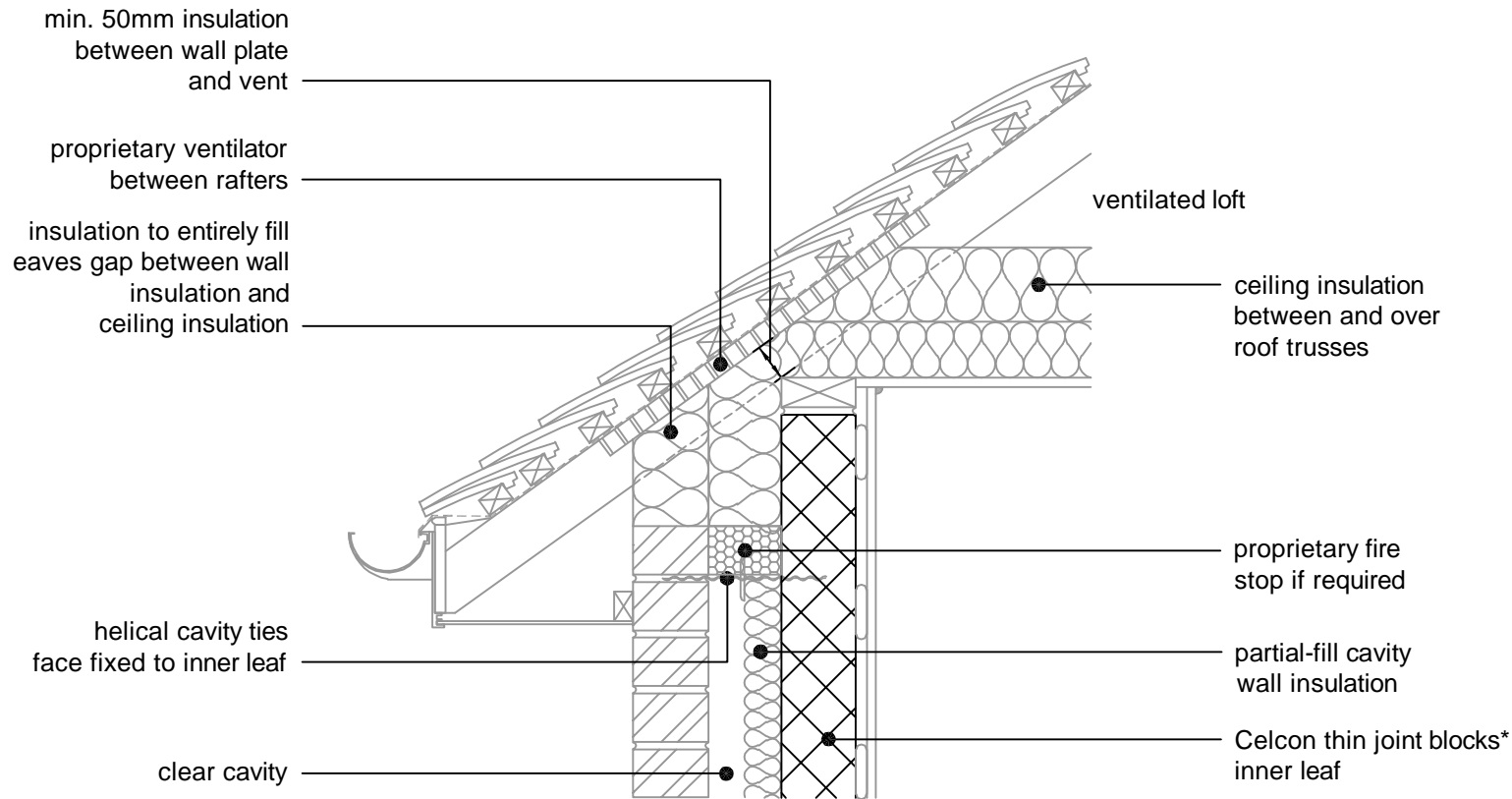
THIN JOINT

TITLE External Masonry Cavity Wall,
 Partial Fill - Pitched Roof, Gable - Insulation
 At Rafter Level, Unventilated Rafter Void

DWG No. **HH-TJ-PF-11**

DRAWN BY **SJB** CHECKED BY **AHR**

DATE **Nov 2012** SCALE **1:100 @ A4** REV. NO. **E**



* Thin joint block formats are:
 Plus = 630mm x 215mm
 Jumbo Blok = 630mm x 250mm
 in 2mm Celfix mortar joints

This junction detail has been assessed by H+H UK Ltd. for thermal performance based on various Celcon blocks and insulation combinations. Applicable Ψ -values and minimum temperature factors compatible with the latest Building Regulations can be found in our 'H+H Calculated Ψ -values' document, available to download from our website www.hhcelcon.co.uk.

REV.	DATE	DESCRIPTION	BY.
E	08/2023	REFERENCES TO CONSTRUCTIVE AND REGISTERED CONSTRUCTION DETAILS REMOVED	SJB
D	04/2021	REFERENCE TO H+H CALCULATED Ψ -VALUES ADDED. BLOCK FORMATS NOTE REVISED.	SJB
C	11/2014	LABC NOTE ADDED	SJB
B	09/2014	BLOCK FORMATS NOTE REVISED	SJB
A	11/2013	WALL PLATE INSULATION COVER NOTE MOVED	SJB

These details have been produced for guidance only. It is the responsibility of the building designer to ensure that the details shown are compatible with the overall building design and will satisfy the relevant parts of the Building Regulations applicable before they are adopted into the project design.



H+H UK Limited
 Technical Services Dept.
 Celcon House
 Ightham, Sevenoaks
 Kent, TN15 9HZ.
 Tel +44 (0)1732 880580
 Fax +44 (0)1732 887013
 Email tsd@hhcelcon.co.uk

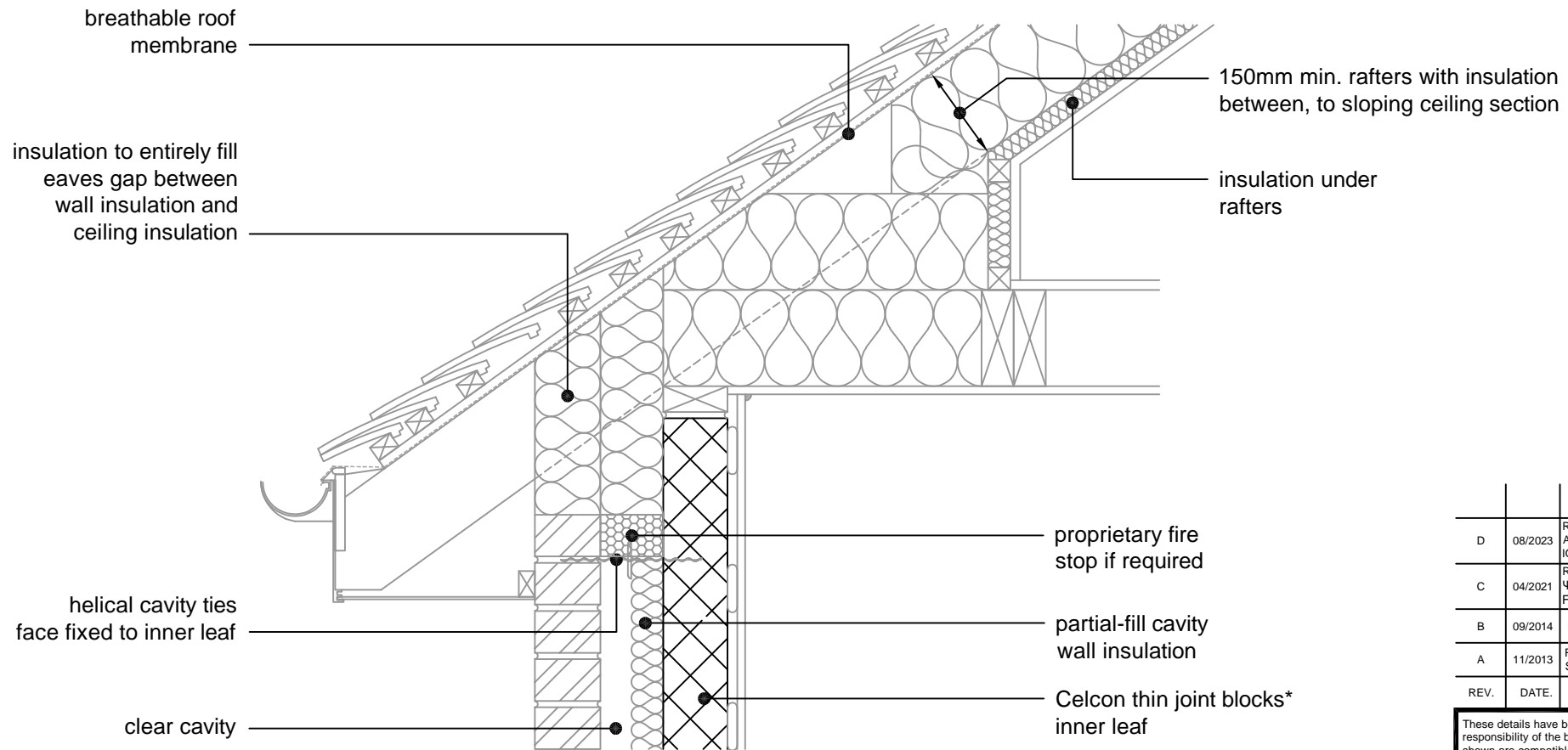
THIN JOINT

TITLE External Masonry Cavity Wall,
 Partial Fill - Pitched Roof, Eaves - Insulation
 At Ceiling Level, Ventilated Loft

DWG No. HH-TJ-PF-12

DRAWN BY SJB CHECKED BY AHR

DATE Nov 2012 SCALE 1:100 @ A4 REV. NO. E



* Thin joint block formats are:
 Plus = 630mm x 215mm
 Jumbo Blok = 630mm x 250mm
 in 2mm Celfix mortar joints

This junction detail has been assessed by H+H UK Ltd. for thermal performance based on various Celcon blocks and insulation combinations. Applicable Ψ -values and minimum temperature factors compatible with the latest Building Regulations can be found in our 'H+H Calculated Ψ -values' document, available to download from our website www.hhcelcon.co.uk.

REV.	DATE.	DESCRIPTION.	BY.
D	08/2023	REFERENCES TO CONSTRUCTIVE AND REGISTERED CONSTRUCTION DETAILS REMOVED	SJB
C	04/2021	REFERENCE TO H+H CALCULATED Ψ -VALUES ADDED. BLOCK FORMATS NOTE REVISED.	SJB
B	09/2014	BLOCK FORMATS NOTE REVISED	SJB
A	11/2013	RAFTERS INSULATION NOW SHOWN AS 150mm.	SJB

These details have been produced for guidance only. It is the responsibility of the building designer to ensure that the details shown are compatible with the overall building design and will satisfy the relevant parts of the Building Regulations applicable before they are adopted into the project design.



H+H UK Limited
 Technical Services Dept.
 Celcon House
 Ightham, Sevenoaks
 Kent, TN15 9HZ
 Tel +44 (0)1732 880580
 Fax +44 (0)1732 887013
 Email tsd@hhcelcon.co.uk

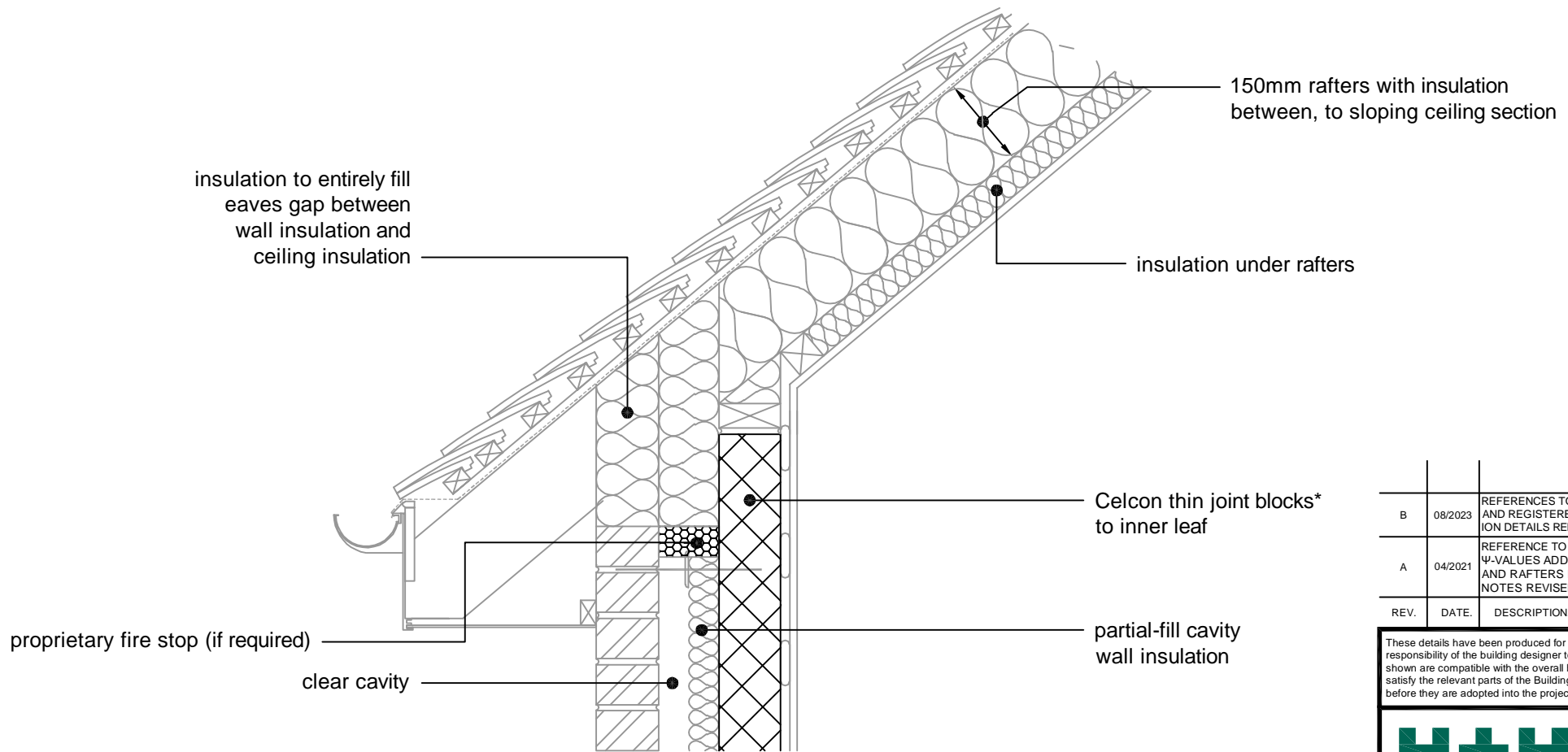
THIN JOINT

TITLE External Masonry Cavity Wall,
 Partial Fill - Pitched Roof, Eaves - Insulation
 At Rafter Level, Unventilated Rafter Void

DWG No. **HH-TJ-PF-13**

DRAWN BY **SJB** CHECKED BY **AHR**

DATE **Nov 2012** SCALE **1:100 @ A4** REV.NO. **D**



* Thin joint block formats are:
 Plus = 630mm x 215mm
 Jumbo Blok = 630mm x 250mm
 in 2mm Celfix mortar joints

This junction detail has been assessed by H+H UK Ltd. for thermal performance based on various Celcon blocks and insulation combinations. Applicable Ψ -values and minimum temperature factors compatible with the latest Building Regulations can be found in our 'H+H Calculated Ψ -values' document, available to download from our website www.hhcelcon.co.uk.

REV.	DATE	DESCRIPTION	BY.
B	08/2023	REFERENCES TO CONSTRUCTIVE AND REGISTERED CONSTRUCTION DETAILS REMOVED	SJB
A	04/2021	REFERENCE TO H+H CALCULATED Ψ -VALUES ADDED. FIRE STOP AND RAFTERS INSULATION NOTES REVISED	SJB

These details have been produced for guidance only. It is the responsibility of the building designer to ensure that the details shown are compatible with the overall building design and will satisfy the relevant parts of the Building Regulations applicable before they are adopted into the project design.



H+H UK Limited
 Technical Services Dept.
 Celcon House
 Ightham, Sevenoaks
 Kent, TN15 9HZ
 Tel +44 (0)1732 880580
 Fax +44 (0)1732 887013
 Email tsd@hhcelcon.co.uk

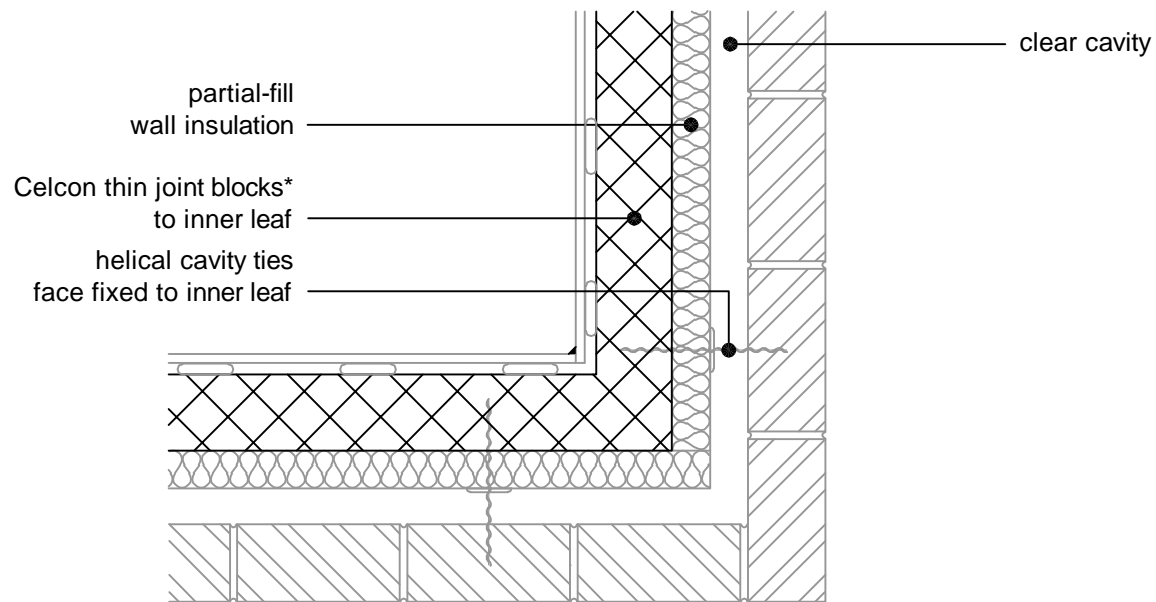
THIN JOINT

TITLE External Masonry Cavity Wall,
 Partial Fill - Pitched Roof, Eaves, Insulated
 At Rafter Level, Unventilated Rafter Void

DWG No. HH-TJ-PF-23

DRAWN BY SJB CHECKED BY AHR

DATE Nov 2014 SCALE 1:100 @ A4 REV.NO. B



* Thin joint block formats are:
 Plus = 630mm x 215mm
 Jumbo Blok = 630mm x 250mm
 in 2mm Celfix mortar joints

This junction detail has been assessed by H+H UK Ltd. for thermal performance based on various Celcon blocks and insulation combinations. Applicable Ψ -values and minimum temperature factors compatible with the latest Building Regulations can be found in our 'H+H Calculated Ψ -values' document, available to download from our website www.hhcelcon.co.uk.

REV.	DATE	DESCRIPTION	BY.
D	08/2023	REFERENCES TO CONSTRUCTIVE AND REGISTERED CONSTRUCTION DETAILS REMOVED	SJB
C	04/2021	REFERENCE TO H+H CALCULATED Ψ -VALUES ADDED. BLOCK FORMATS NOTE REVISED.	SJB
B	11/2014	LABC NOTE ADDED	SJB
A	09/2014	BLOCK FORMATS NOTE REVISED	SJB

These details have been produced for guidance only. It is the responsibility of the building designer to ensure that the details shown are compatible with the overall building design and will satisfy the relevant parts of the Building Regulations applicable before they are adopted into the project design.



H+H UK Limited
 Technical Services Dept.
 Celcon House
 Ightham, Sevenoaks
 Kent, TN15 9HZ.
 Tel +44 (0)1732 880580
 Fax +44 (0)1732 887013
 Email tsd@hhcelcon.co.uk

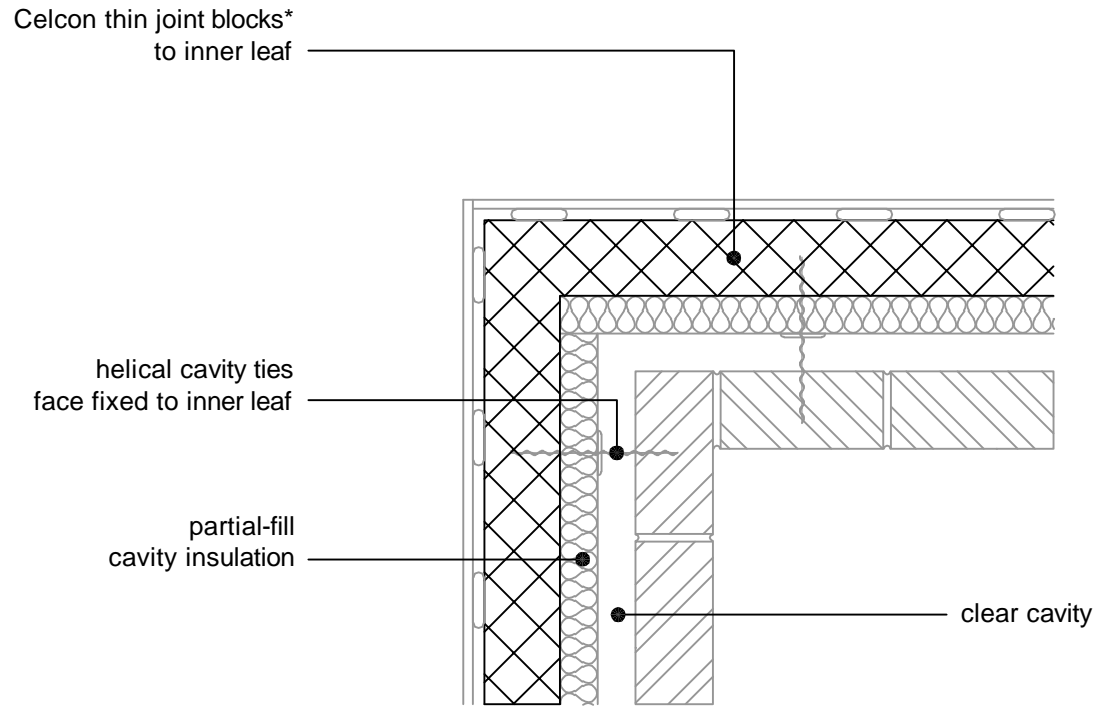
THIN JOINT

TITLE
 External Masonry Cavity Wall,
 Partial Fill - Normal Corner

DWG No. HH-TJ-PF-14

DRAWN BY SJB CHECKED BY AHR

DATE Nov 2012 SCALE 1:100 @ A4 REV. NO. D



* Thin joint block formats are:
 Plus = 630mm x 215mm
 Jumbo Blok = 630mm x 250mm
 in 2mm Celfix mortar joints

This junction detail has been assessed by H+H UK Ltd. for thermal performance based on various Celcon blocks and insulation combinations. Applicable Ψ -values and minimum temperature factors compatible with the latest Building Regulations can be found in our 'H+H Calculated Ψ -values' document, available to download from our website www.hhcelcon.co.uk.

REV.	DATE	DESCRIPTION	BY.
D	08/2023	REFERENCES TO CONSTRUCTIVE AND REGISTERED CONSTRUCTION DETAILS REMOVED	SJB
C	04/2021	REFERENCE TO H+H CALCULATED Ψ -VALUES ADDED. BLOCK FORMATS NOTE REVISED.	SJB
B	11/2014	LABC NOTE ADDED	SJB
A	09/2014	BLOCK FORMATS NOTE REVISED	SJB

These details have been produced for guidance only. It is the responsibility of the building designer to ensure that the details shown are compatible with the overall building design and will satisfy the relevant parts of the Building Regulations applicable before they are adopted into the project design.



H+H UK Limited
 Technical Services Dept.
 Celcon House
 Ightham, Sevenoaks
 Kent, TN15 9HZ.
 Tel +44 (0)1732 880580
 Fax +44 (0)1732 887013
 Email tsd@hhcelcon.co.uk

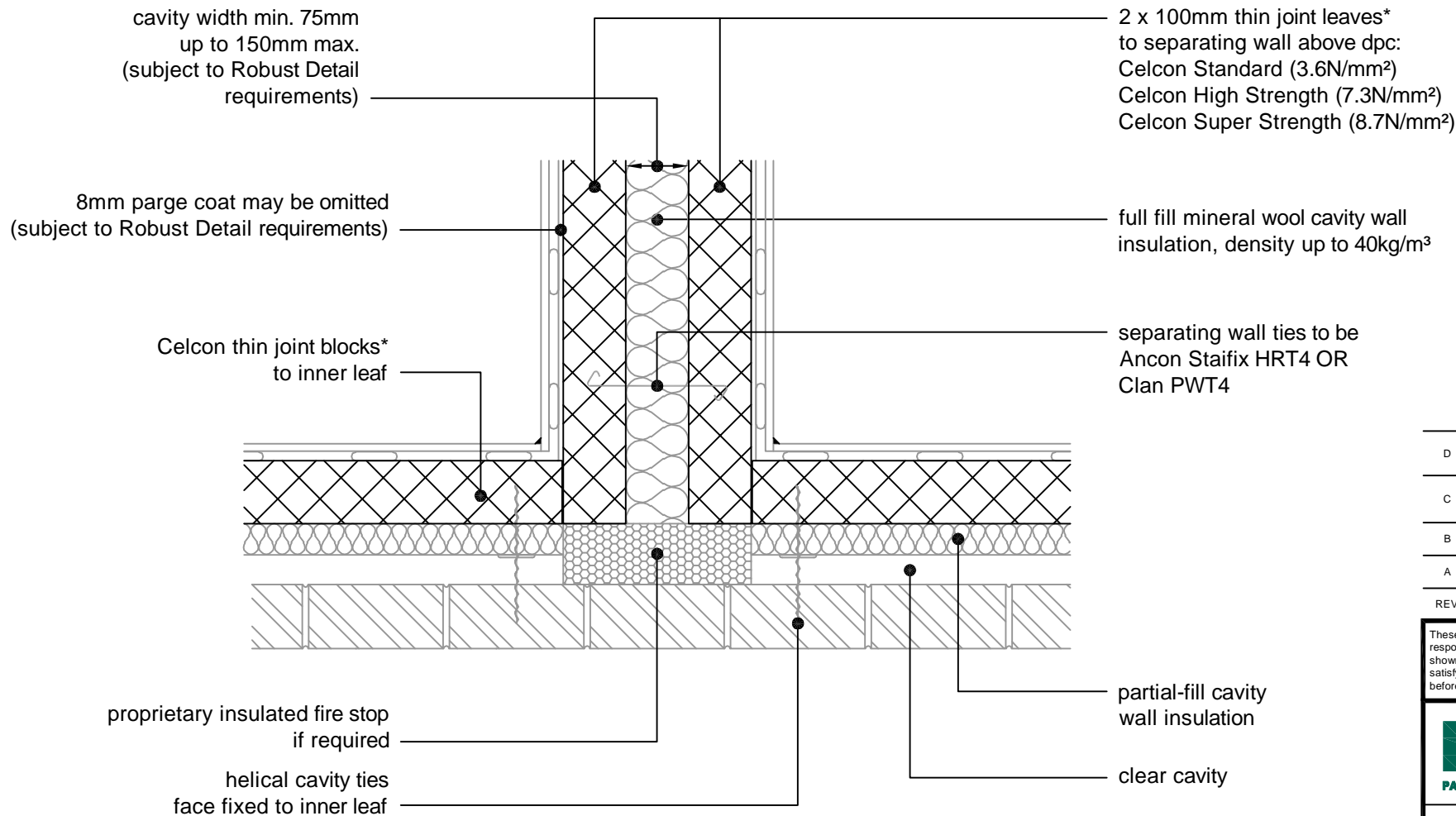
THIN JOINT

TITLE
 External Masonry Cavity Wall,
 Partial Fill - Inverted Corner

DWG No. **HH-TJ-PF-15**

DRAWN BY **SJB** CHECKED BY **AHR**

DATE **Nov 2012** SCALE **1:100 @ A4** REV.NO. **D**



* Thin joint block formats are:
 Plus = 630mm x 215mm
 Jumbo Blok = 630mm x 250mm
 in 2mm Celfix mortar joints

This junction detail has been assessed by H+H UK Ltd. for thermal performance based on various Celcon blocks and insulation combinations. Applicable Ψ -values and minimum temperature factors compatible with the latest Building Regulations can be found in our 'H+H Calculated Ψ -values' document, available to download from our website www.hhcelcon.co.uk.

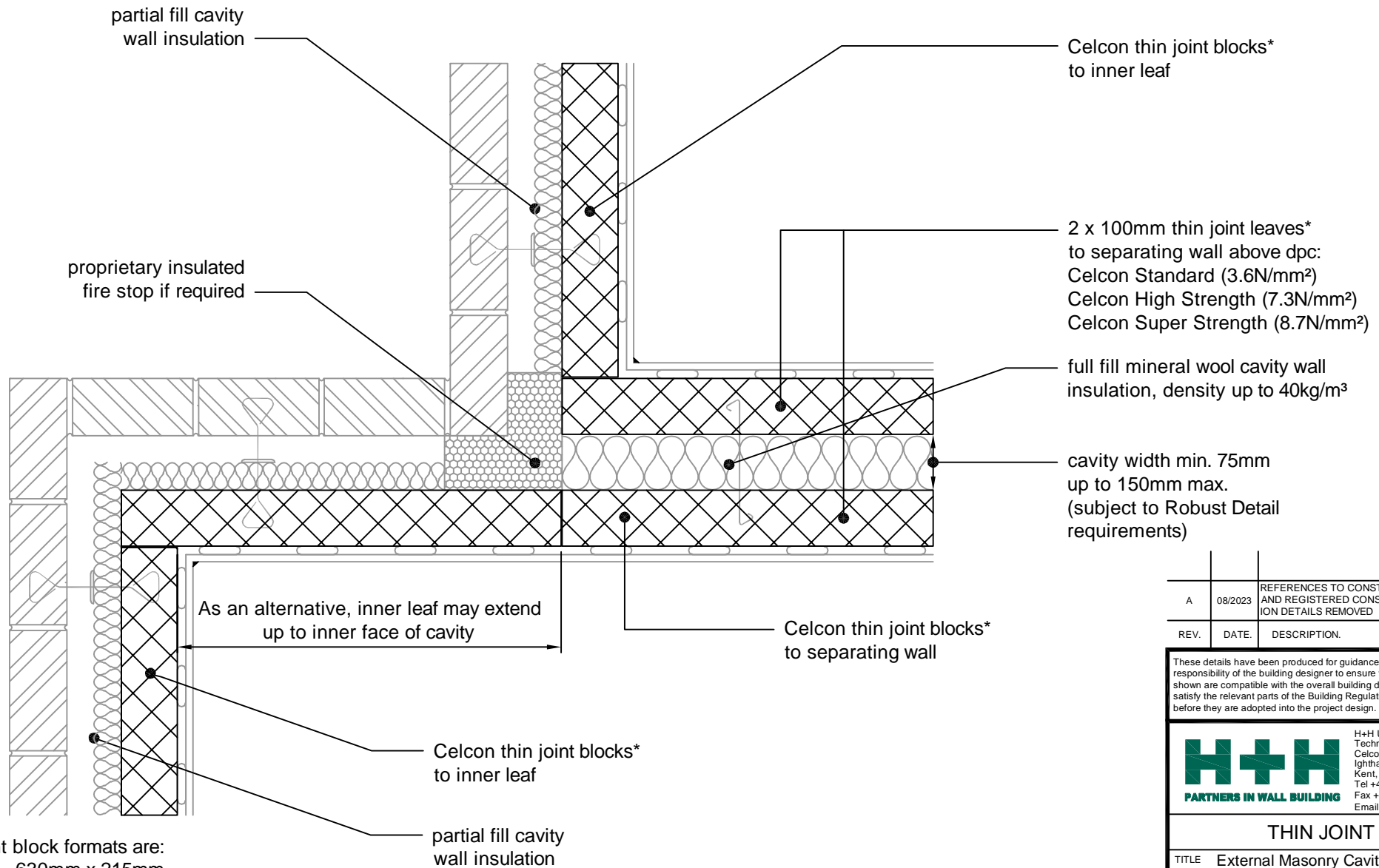
REV.	DATE	DESCRIPTION	BY.
D	08/2023	REFERENCES TO CONSTRUCTIVE AND REGISTERED CONSTRUCTION DETAILS REMOVED	SJB
C	04/2021	REFERENCE TO H+H CALCULATED Ψ -VALUES ADDED. MAX. CAVITY WIDTH REVISED.	SJB
B	11/2014	PROPRIETARY FIRE STOP NOTE REVISED. LABC NOTE ADDED.	SJB
A	09/2014	BLOCK FORMATS NOTE REVISED	SJB

These details have been produced for guidance only. It is the responsibility of the building designer to ensure that the details shown are compatible with the overall building design and will satisfy the relevant parts of the Building Regulations applicable before they are adopted into the project design.

H+H PARTNERS IN WALL BUILDING

H+H UK Limited
 Technical Services Dept.
 Celcon House
 Ightham, Sevenoaks
 Kent, TN15 9HZ.
 Tel +44 (0)1732 880580
 Fax +44 (0)1732 887013
 Email tsd@hhcelcon.co.uk

THIN JOINT		
TITLE External Masonry Cavity Wall, Partial Fill - Party Wall Between Dwellings		
DWG No. HH-TJ-PF-16		
DRAWN BY SJB	CHECKED BY AHR	
DATE Nov 2012	SCALE 1:100 @ A4	REV.NO. D



* Thin joint block formats are:
 Plus = 630mm x 215mm
 Jumbo Blok = 630mm x 250mm
 in 2mm Celfix mortar joints

This junction detail has been assessed by H+H UK Ltd. for thermal performance based on various Celcon blocks and insulation combinations. Applicable Ψ -values and minimum temperature factors compatible with the latest Building Regulations can be found in our 'H+H Calculated Ψ -values' document, available to download from our website www.hhcelcon.co.uk.

REV.	DATE	DESCRIPTION	BY.
A	08/2023	REFERENCES TO CONSTRUCTIVE AND REGISTERED CONSTRUCTION DETAILS REMOVED	SJB

These details have been produced for guidance only. It is the responsibility of the building designer to ensure that the details shown are compatible with the overall building design and will satisfy the relevant parts of the Building Regulations applicable before they are adopted into the project design.

H+H PARTNERS IN WALL BUILDING

H+H UK Limited
 Technical Services Dept.
 Celcon House
 Ightham, Sevenoaks
 Kent, TN15 9HZ.
 Tel +44 (0)1732 880580
 Fax +44 (0)1732 887013
 Email tsd@hhcelcon.co.uk

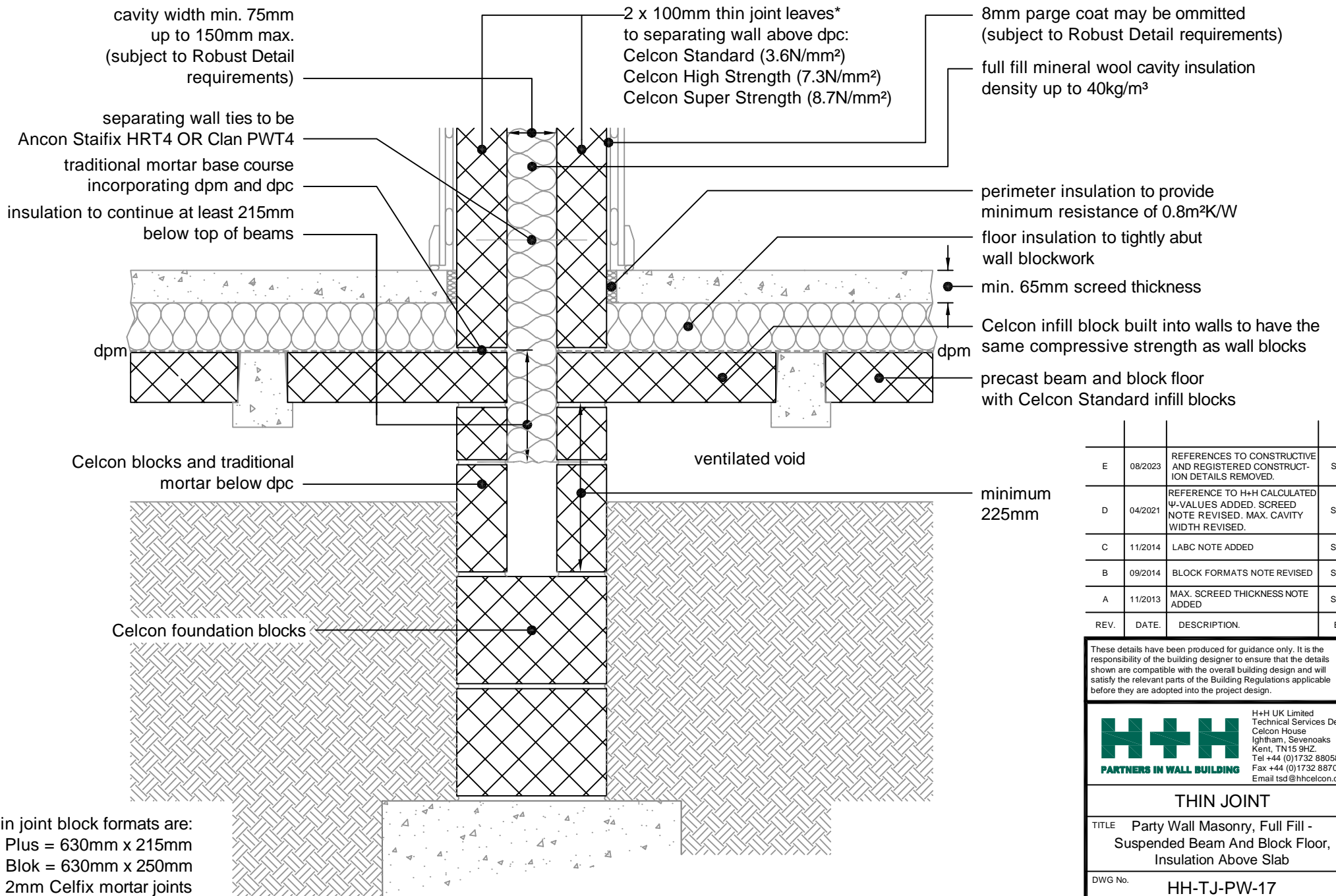
THIN JOINT

TITLE External Masonry Cavity Wall,
 Partial Fill - Staggered External (flanking)
 Wall Junction

DWG No. HH-TJ-PF-24

DRAWN BY SJB CHECKED BY AHR

DATE Apr 2021 SCALE 1:100 @ A4 REV.NO. A



* Thin joint block formats are:
 Plus = 630mm x 215mm
 Jumbo Blok = 630mm x 250mm
 in 2mm Celfix mortar joints

This junction detail has been assessed by H+H UK Ltd. for thermal performance based on various Celcon blocks and insulation combinations. Applicable Ψ -values and minimum temperature factors compatible with the latest Building Regulations can be found in our 'H+H Calculated Ψ -values' document, available to download from our website www.hhcelcon.co.uk.

REV.	DATE	DESCRIPTION	BY.
E	08/2023	REFERENCES TO CONSTRUCTIVE AND REGISTERED CONSTRUCTION DETAILS REMOVED.	SJB
D	04/2021	REFERENCE TO H+H CALCULATED Ψ -VALUES ADDED. SCREED NOTE REVISED. MAX. CAVITY WIDTH REVISED.	SJB
C	11/2014	LABC NOTE ADDED	SJB
B	09/2014	BLOCK FORMATS NOTE REVISED	SJB
A	11/2013	MAX. SCREED THICKNESS NOTE ADDED	SJB

These details have been produced for guidance only. It is the responsibility of the building designer to ensure that the details shown are compatible with the overall building design and will satisfy the relevant parts of the Building Regulations applicable before they are adopted into the project design.

H+H
 PARTNERS IN WALL BUILDING

H+H UK Limited
 Technical Services Dept.
 Celcon House
 Igham, Sevenoaks
 Kent, TN15 9HZ.
 Tel +44 (0)1732 880580
 Fax +44 (0)1732 887013
 Email tsd@hhcelcon.co.uk

THIN JOINT

TITLE	Party Wall Masonry, Full Fill - Suspended Beam And Block Floor, Insulation Above Slab		
DWG No.	HH-TJ-PW-17		
DRAWN BY	SJB	CHECKED BY	AHR
DATE	Nov 2012	SCALE	1:100 @ A4
		REV.NO.	E

cavity width min. 75mm
up to 150mm max.
(subject to Robust Detail
requirements)

8mm parg coat may be omitted
(subject to Robust Detail
Requirement)

Celcon blocks and traditional
mortar below ground

dpm

Celcon foundation blocks

2 x 100mm thin joint leaves*
to separating wall above dpc:
Celcon Standard (3.6N/mm²)
Celcon High Strength (7.3N/mm²)
Celcon Super Strength (8.7N/mm²)

full fill mineral wool cavity wall
insulation, density up to 40kg/m³

separating wall ties to be Ancon
Staifix HRT4 or Clan PWT4

traditional mortar base course
incorporating lapped dpm and dpc

floor insulation to tightly abut
wall blockwork

insulation to
continue at
least
215mm
below
underside
of slab

REV.	DATE	DESCRIPTION	BY.
E	08/2023	REFERENCES TO CONSTRUCTIVE AND REGISTERED CONSTRUCTION DETAILS REMOVED.	SJB
D	04/2021	REFERENCE TO H+H CALCULATED Ψ-VALUES ADDED. MAX. CAVITY WIDTH REVISED.	SJB
C	11/2014	MAX. FLOOR THICKNESS NOTE REMOVED. LABC REFERENCE ADDED.	SJB
B	09/2014	BLOCK FORMATS NOTE REVISED	SJB
A	11/2013	MAX. FLOOR THICKNESS NOTE ADDED	SJB

These details have been produced for guidance only. It is the responsibility of the building designer to ensure that the details shown are compatible with the overall building design and will satisfy the relevant parts of the Building Regulations applicable before they are adopted into the project design.

H+H
PARTNERS IN WALL BUILDING

H+H UK Limited
Technical Services Dept.
Celcon House
Ightham, Sevenoaks
Kent, TN15 9HZ.
Tel +44 (0)1732 880580
Fax +44 (0)1732 887013
Email tsd@hhcelcon.co.uk

THIN JOINT

TITLE	Party Wall Masonry, Full Fill - Suspended Concrete Floor, Insulation Below Slab		
DWG No.	HH-TJ-PW-18		
DRAWN BY	SJB	CHECKED BY	AHR
DATE	Nov 2012	SCALE	1:100 @ A4
REV. NO.	E		

* Thin joint block formats are:
Plus = 630mm x 215mm
Jumbo Blok = 630mm x 250mm
in 2mm Celfix mortar joints

This junction detail has been assessed by H+H UK Ltd. for thermal performance based on various Celcon blocks and insulation combinations. Applicable Ψ-values and minimum temperature factors compatible with the latest Building Regulations can be found in our 'H+H Calculated Ψ-values' document, available to download from our website www.hhcelcon.co.uk.

cavity width min. 75mm
up to 150mm max.
(subject to Robust Detail
requirements)

8mm parge coat may be omitted
(subject to Robust Detail
Requirement)

traditional mortar base course
incorporating lapped dpm and dpc
Celcon blocks and traditional
mortar below ground

dpm

2 x 100mm thin joint leaves*
to separating wall above dpc:
Celcon Standard (3.6N/mm²)
Celcon High Strength (7.3N/mm²)
Celcon Super Strength (8.7N/mm²)

separating wall ties to be Ancon
Staifix HRT4 or Clan PWT4

full fill mineral wool cavity wall
insulation, density up to 40kg/m³

perimeter insulation to provide
minimum resistance of 0.8m²K/W

floor insulation to tightly abut
wall blockwork

insulation to
continue at
least 215mm
below
underside
of slab

dpm

Celcon foundation blocks

* Thin joint block formats are:
Plus = 630mm x 215mm
Jumbo Blok = 630mm x 250mm
in 2mm Celfix mortar joints

REV.	DATE	DESCRIPTION	BY.
E	08/2023	REFERENCES TO CONSTRUCTIVE AND REGISTERED CONSTRUCTION DETAILS REMOVED.	SJB
D	04/2021	REFERENCE TO H+H CALCULATED Ψ-VALUES ADDED. MAX. CAVITY WIDTH REVISED.	SJB
C	11/2014	MAX. FLOOR THICKNESS NOTE REMOVED. LABC REFERENCE ADDED.	SJB
B	09/2014	BLOCK FORMATS NOTE REVISED	SJB
A	11/2013	MAX. FLOOR THICKNESS NOTE ADDED	SJB

These details have been produced for guidance only. It is the responsibility of the building designer to ensure that the details shown are compatible with the overall building design and will satisfy the relevant parts of the Building Regulations applicable before they are adopted into the project design.

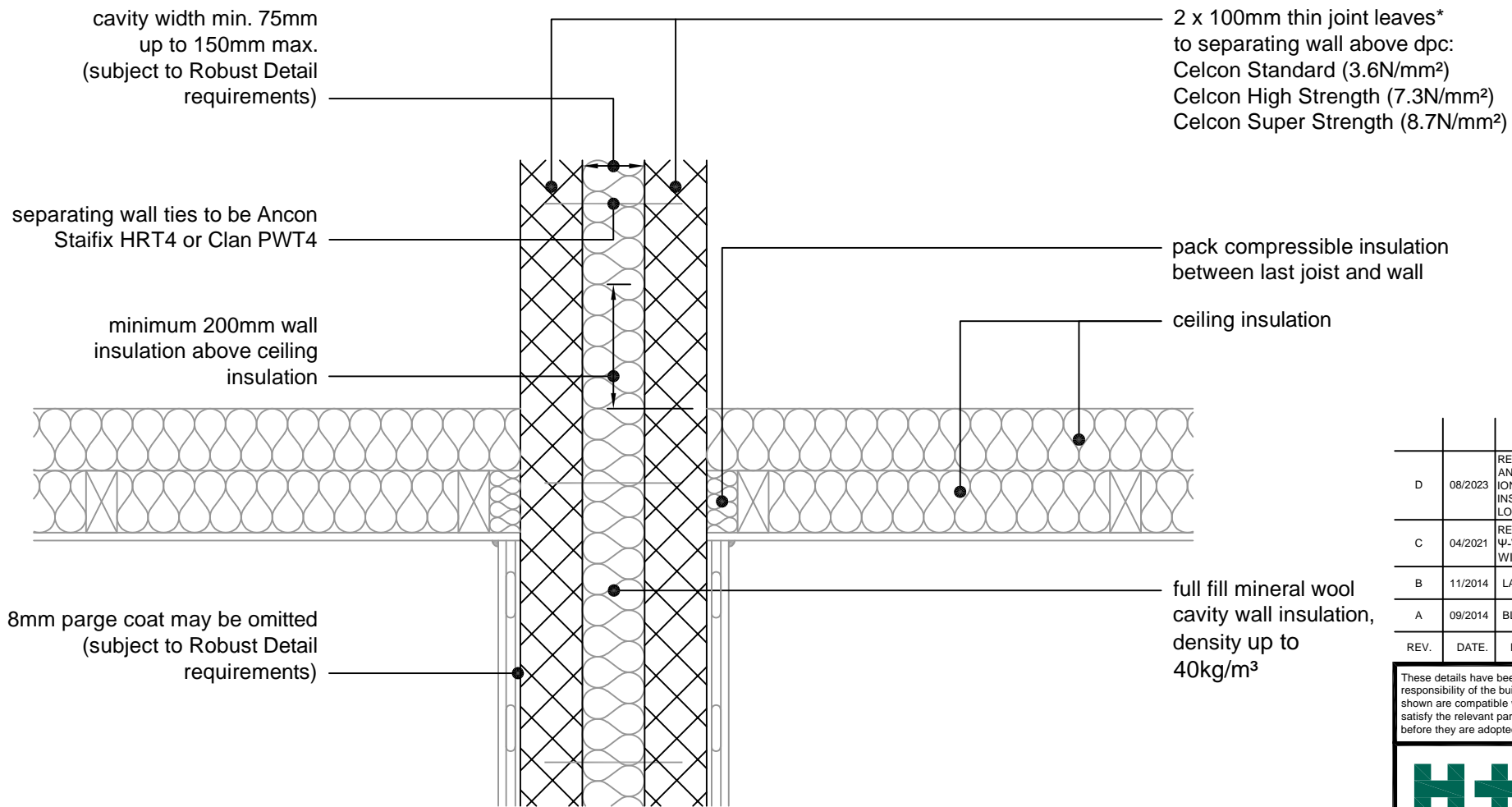
H+H PARTNERS IN WALL BUILDING

H+H UK Limited
Technical Services Dept.
Celcon House
Ightham, Sevenoaks
Kent, TN15 9HZ.
Tel +44 (0)1732 880580
Fax +44 (0)1732 887013
Email tsd@hhcelcon.co.uk

THIN JOINT

TITLE	Party Wall Masonry, Full Fill - In-situ Concrete Ground Bearing Floor, Insulation Below Slab		
DWG No.	HH-TJ-PW-19		
DRAWN BY	SJB	CHECKED BY	AHR
DATE	Nov 2012	SCALE	1:100 @ A4
REV. NO.	E		

This junction detail has been assessed by H+H UK Ltd. for thermal performance based on various Celcon blocks and insulation combinations. Applicable Ψ-values and minimum temperature factors compatible with the latest Building Regulations can be found in our 'H+H Calculated Ψ-values' document, available to download from our website www.hhcelcon.co.uk.



* Thin joint block formats are:
 Plus = 630mm x 215mm
 Jumbo Blok = 630mm x 250mm
 in 2mm Celfix mortar joints

This junction detail has been assessed by H+H UK Ltd. for thermal performance based on various Celcon blocks and insulation combinations. Applicable Ψ -values and minimum temperature factors compatible with the latest Building Regulations can be found in our 'H+H Calculated Ψ -values' document, available to download from our website www.hhcelcon.co.uk.

REV.	DATE.	DESCRIPTION.	BY.
D	08/2023	REFERENCES TO CONSTRUCTIVE AND REGISTERED CONSTRUCTION DETAILS REMOVED. INSULATION BEHIND LAST JOIST LOWERED TO FLUSH WITH JOIST	SJB
C	04/2021	REFERENCE TO H+H CALCULATED Ψ -VALUES ADDED. MAX. CAVITY WIDTH REVISED.	SJB
B	11/2014	LABC NOTE ADDED	SJB
A	09/2014	BLOCK FORMATS NOTE REVISED	SJB

These details have been produced for guidance only. It is the responsibility of the building designer to ensure that the details shown are compatible with the overall building design and will satisfy the relevant parts of the Building Regulations applicable before they are adopted into the project design.

H+H
 PARTNERS IN WALL BUILDING

H+H UK Limited
 Technical Services Dept.
 Celcon House
 Ightham, Sevenoaks
 Kent, TN15 9HZ
 Tel +44 (0)1732 880580
 Fax +44 (0)1732 887013
 Email tsd@hhcelcon.co.uk

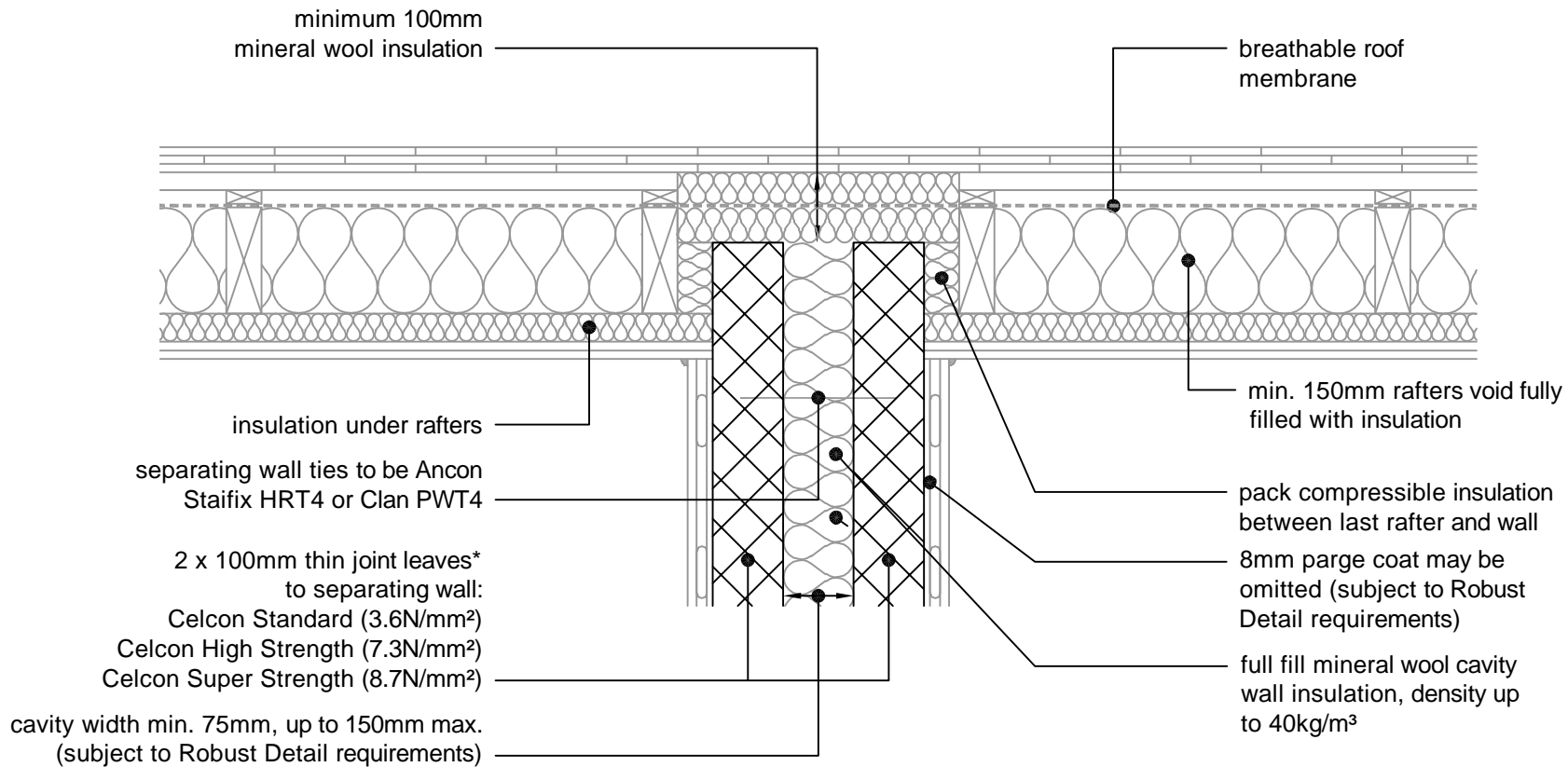
THIN JOINT

TITLE Party Wall Masonry, Full Fill - Roof, Insulated At Ceiling Level, Ventilated Loft

DWG No. HH-TJ-PW-20

DRAWN BY SJB CHECKED BY AHR

DATE Nov 2012 SCALE 1:100 @ A4 REV.NO. D



REV.	DATE	DESCRIPTION	BY.
E	08/2023	REFERENCES TO CONSTRUCTIVE AND REGISTERED CONSTRUCTION DETAILS REMOVED.	SJB
D	04/2021	REFERENCE TO H+H CALCULATED Ψ-VALUES ADDED. PLASTERBOARD LAYER REMOVED. RAFTERS NOTES REVISED. MAX. CAVITY WIDTH REVISED	SJB
C	11/2014	LABC NOTE ADDED	SJB
B	09/2014	BLOCK FORMATS NOTE REVISED	SJB
A	11/2013	RAFTERS INSULATION THICKNESS NOTE ADDED	SJB

These details have been produced for guidance only. It is the responsibility of the building designer to ensure that the details shown are compatible with the overall building design and will satisfy the relevant parts of the Building Regulations applicable before they are adopted into the project design.

H+H H+H UK Limited
 Technical Services Dept.
 Celcon House
 Ightham, Sevenoaks
 Kent, TN15 9HZ.
 Tel +44 (0)1732 880580
 Fax +44 (0)1732 887013
 Email tsd@hhcelcon.co.uk

THIN JOINT

TITLE	Party Wall Masonry, Full Fill - Roof, Insulated At Rafter Level, Unventilated Rafter Void		
DWG No.	HH-TJ-PW-21		
DRAWN BY	SJB	CHECKED BY	AHR
DATE	Nov 2012	SCALE	1:100 @ A4
		REV.NO.	E

* Thin joint block formats are:
 Plus = 630mm x 215mm
 Jumbo Blok = 630mm x 250mm
 in 2mm Celfix mortar joints

This junction detail has been assessed by H+H UK Ltd. for thermal performance based on various Celcon blocks and insulation combinations. Applicable Ψ-values and minimum temperature factors compatible with the latest Building Regulations can be found in our 'H+H Calculated Ψ-values' document, available to download from our website www.hhcelcon.co.uk.